
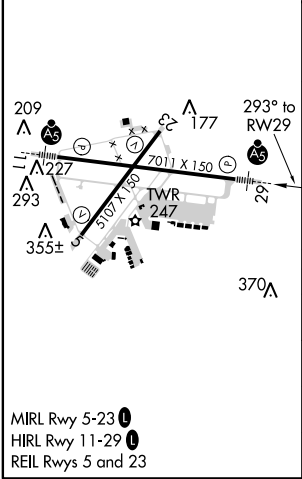
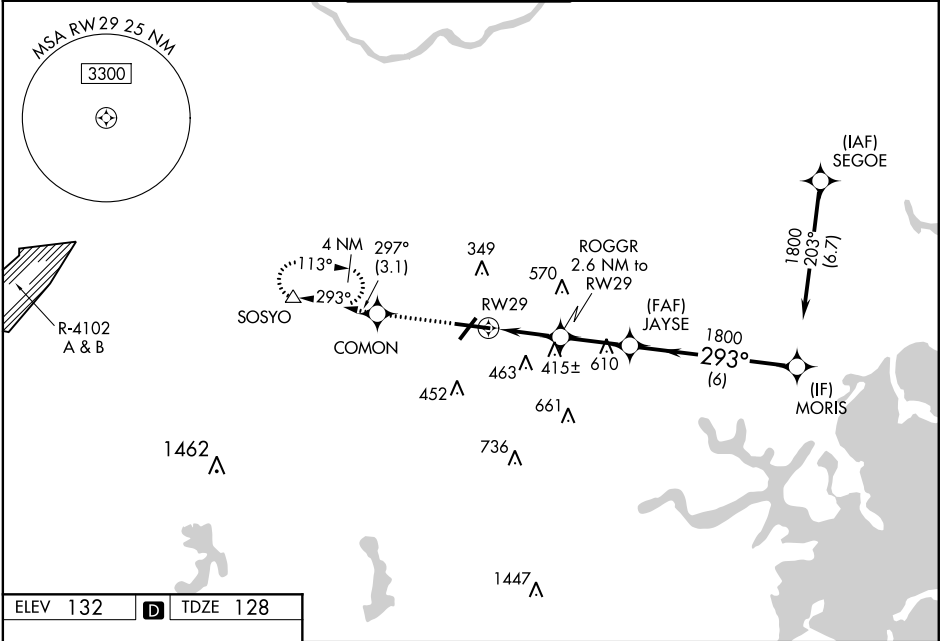
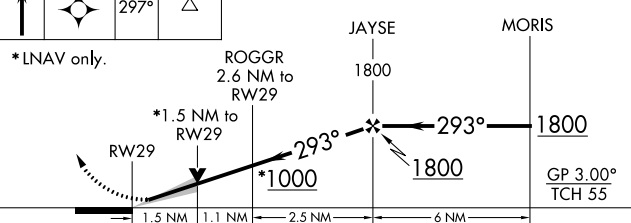


WAAS CH 86612 W29A	APP CRS 293°	Rwy Idg 7011 TDZE 128 Apt Elev 132
--	------------------------	---

RNAV (GPS) Z RWY 29
LAURENCE G HANSCOM FIELD (BED)

RNP APCH.						MISSED APPROACH Climb to 2000 direct COMMON and on track 297° to SOSYO and hold.
For uncompensated Baro-VNAV systems, LNAV/VNAV NA below -16°C (4°F) or above 54°C (130°F). Baro-VNAV and VDP NA with Boston altimeter setting. When local altimeter setting not received, use Boston altimeter setting: increase LPV DA to 377 feet, LNAV/VNAV DA to 663 feet; increase all MDAs 60 feet and LNAV Cats C and D, and Circling Cat D visibility ¼ SM. For inop ALS, increase LNAV/VNAV all Cats visibility and LNAV Cat C/D to 1 ½ SM. For inop ALS when using Boston altimeter setting, increase LNAV/VNAV all Cats visibility to 1 ½ SM and LNAV Cat C/D to 1 ½ SM.						
ATIS 124.6	BOSTON APP CON 124.4 279.6		HANSCOM TOWER★ 118.5 (CTAF) 0 257.2	GND CON 121.7	CLNC DEL 121.85	UNICOM 122.95



2000	COMON	tr 297°	SOSYO
*LNAV only.			
			
RWY 29 1.5 NM 1.1 NM 2.5 NM 6 NM			
CATEGORY A B C D			
LPV DA 328-½ 200 (200-½)			
LNAV/VNAV DA 614-1⅛ 486 (500-1⅛)			
LNAV MDA 640-½ 512 (600-½) 640-1 512 (600-1)			
C CIRCLING 720-1 588 (600-1) 880-2¼ 748 (800-2¼) 920-2½ 788 (800-2½)			

NE-1, 31 DEC 2020 to 28 JAN 2021

NE-1, 31 DEC 2020 to 28 JAN 2021