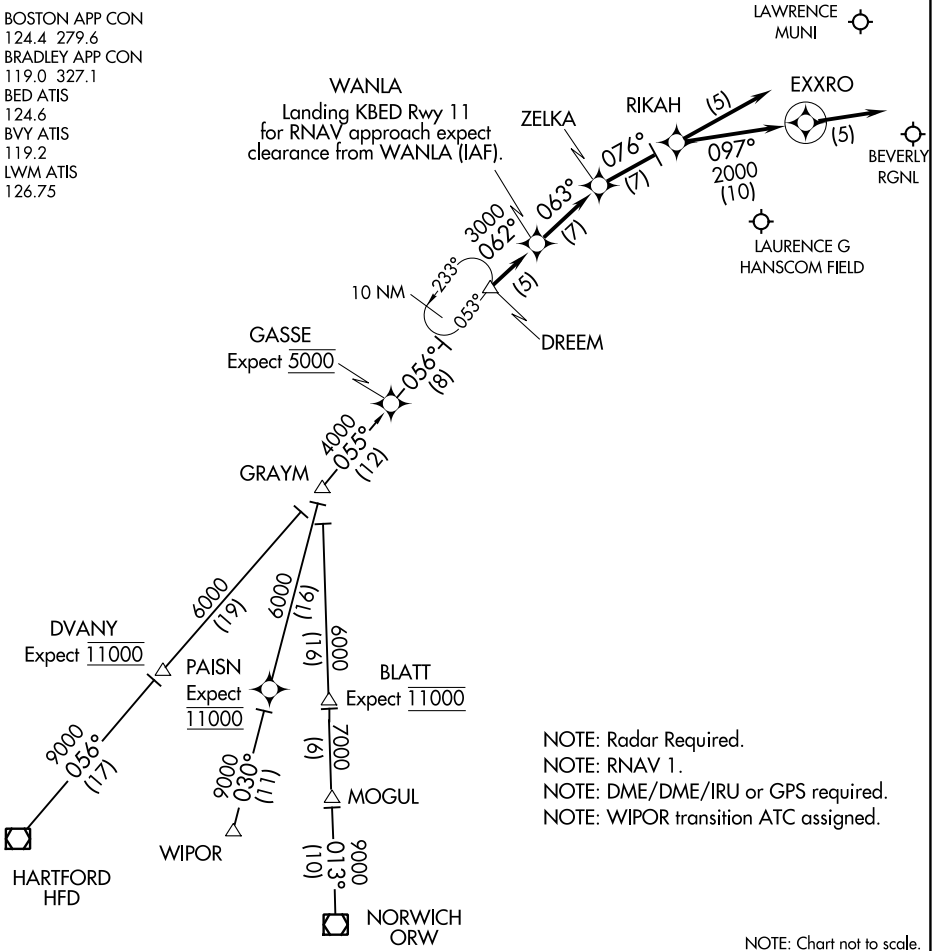


DREEM TWO ARRIVAL (RNAV)

BEDFORD, MASSACHUSETTS

BOSTON APP CON
124.4 279.6
BRADLEY APP CON
119.0 327.1
BED ATIS
124.6
BVY ATIS
119.2
LWM ATIS
126.75



HARTFORD TRANSITION (HFD.DREEM2):
NORWICH TRANSITION (ORW.DREEM2):
WIPOR TRANSITION (WIPOR.DREEM2):

LANDING BVY ALL RWYS, BED RWY 23 & 29: From DREEM on track 062° to WANLA , then on track 063° to ZELKA, then on track 076° to RIKAH, then on track 097° to EXXRO, then on track 097°. Expect radar vectors to destination airport and final approach course.
LANDING BED RWY 11: From DREEM on track 062° to WANLA, then on track 063° to ZELKA. Expect ILS approach.
LANDING LWM ALL RWYS: From DREEM on track 062° to WANLA, then on track 063° to ZELKA, then on track 076° to RIKAH, then on track 076°, expect radar vectors to final approach course.

DREEM TWO ARRIVAL (RNAV)

BEDFORD, MASSACHUSETTS