

| | | |
|---------|----------|------|
| APP CRS | Rwy Idg | 4515 |
| 348° | TDZE | 1158 |
| | Apt Elev | 1166 |

RNAV (GPS) RWY 35

EDWARD F KNAPP STATE (MPV)

RNP APCH.

▼

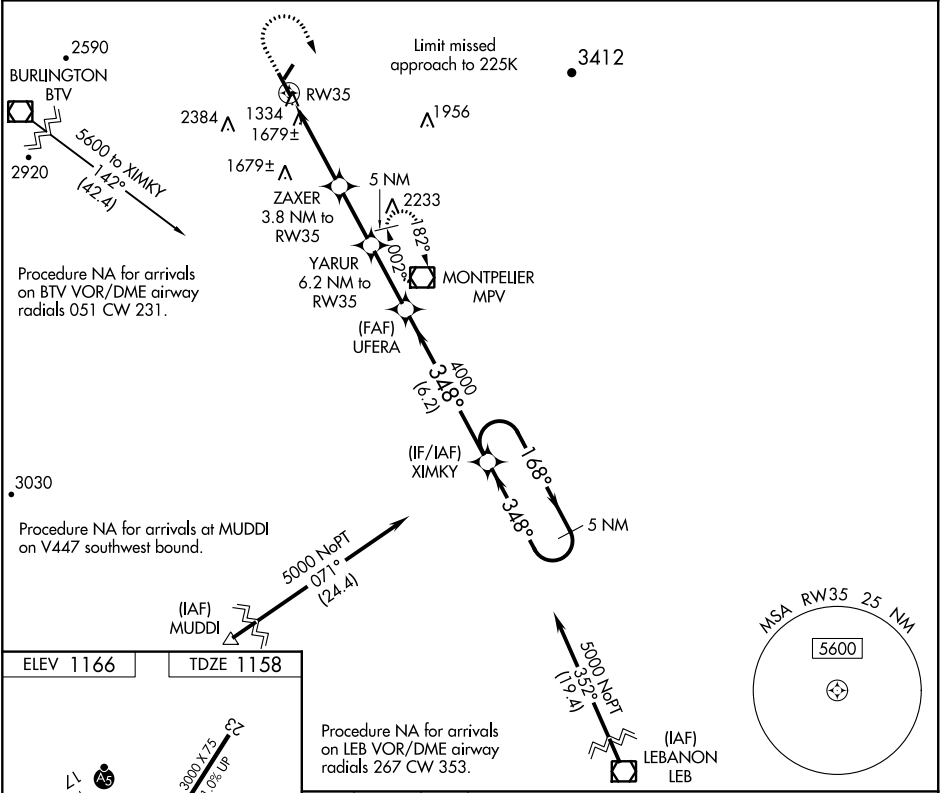
NA

20°C

When local altimeter setting not received, procedure NA. Rwy 35 helicopter visibility reduction below 1 SM NA. Straight-in Rwy 35 NA at night. Circling Rwy 5, 35 NA at night.

MISSED APPROACH: Climb to 2400 then climbing right turn to 5100 direct MPV VOR/DME and hold, continue climb-in-hold to 5100.

| | | |
|---------|---------------|----------------|
| ASOS | BOSTON CENTER | UNICOM |
| 132.675 | 135.7 282.2 | 122.8 (CTAF) 0 |



ELEV 1166

TDZE 1158

Procedure NA for arrivals on LEB VOR/DME airway radials 267 CW 353.

(IAF) LEBANON LEB

Visual Segment - Obstacles.

2400

5100

MPV

YARUR

UFERA

XIMKY

6.2 NM to RW35

5 NM Holding Pattern

348°

168°

5000

3.8 NM

2.4 NM

2.6 NM

6.2 NM

| CATEGORY | A | B | C | D |
|----------|-----------------------|-------------------------|-------------------------|-------------------------|
| LNAV MDA | 1940-1 782 (800-1) | 1940-1¼ 782 (800-1¼) | 1940-2½ 782 (800-2½) | |
| CIRCLING | 1980-1¼ | 814 (900-1¼) | 2700-3 1534 (1600-3) | 2920-3 1754 (1800-3) |

REIL Rwy 17-35

MIRL Rwy 5-23

MIRL Rwy 17-35 0

348° to RW35