

LOC/DME I-MPV	APP CRS	Rwy Idg	5002
108.7	168°	TDZE	1135
Chan 24		Apt Elev	1166

ILS or LOC RWY 17

EDWARD F KNAPP STATE (MPV)

▼

▲ NA

☄ -20°C

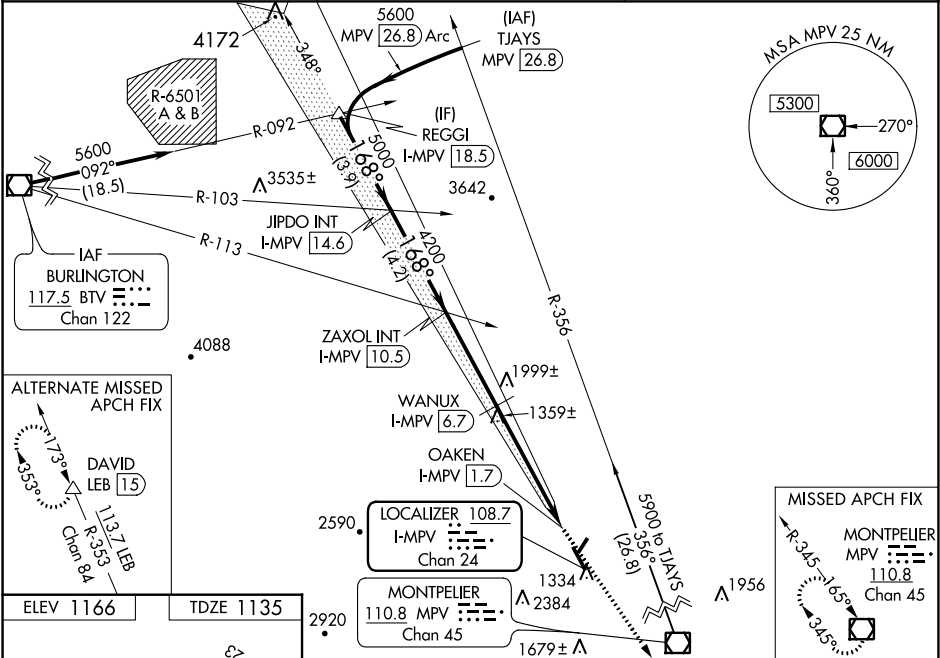
Inoperative table does not apply to S-LOC 17 Cats A and B. When local altimeter setting not received, procedure NA. Rwy 17 helicopter visibility reduction below ¾ SM NA. Circling Rwy 5, 35 NA at night. For inoperative MALSR, increase S-ILS 17 all Cats visibility to 1½ mile and WANUX fix minimums S-LOC 17 Cats A/B visibility to 1 mile and Cats C/D visibility to 1½ mile.

MALSR

MISSED APPROACH:

Climb to 5200 direct MPV VOR/DME and hold, continue climb-in-hold to 5200.

ASOS	BOSTON CENTER	UNICOM
132.675	135.7 282.2	122.8 (CTAF) 0



ELEV 1166	TDZE 1135
-----------	-----------

REIL Rwy 17-35

MIRL Rwy 5-23

MIRL Rwy 17-35 0

FAF to MAP 8.8 NM

Knots	60	90	120	150	180
Min:Sec	8:48	5:52	4:24	3:31	2:56

REGGI I-MPV 18.5 JIPDO I-MPV 14.6 ZAXOL I-MPV 10.5 WANUX I-MPV 6.7 OAKEN I-MPV 2.5				
*LOC only 5200 MPV				
GS 3.00° TCH 50				
Use I-MPV DME when on the Localizer course.				
CATEGORY	A	B	C	D
S-ILS 17	1486-¾ 351 (400-¾)			
S-LOC 17	2980-1¼ 1845 (1900-1¼)	2980-1½ 1845 (1900-1½)	2980-3	1845 (1900-3)
CIRCLING	2980-1¼ 1814 (1900-1¼)	2980-1½ 1814 (1900-1½)	2980-3	1814 (1900-3)
WANUX FIX MINIMUMS				
S-LOC 17	1660-¾ 525 (500-¾)	1660-1¼	525 (500-1¼)	
CIRCLING	1980-1¼ 814 (900-1¼)	2700-3	2920-3	
		1534 (1600-3)	1754 (1800-3)	