

LOC I-BAF	APP CRS	Rwy Idg
111.9	204°	8919
	TDZE	270
	Apt Elev	270

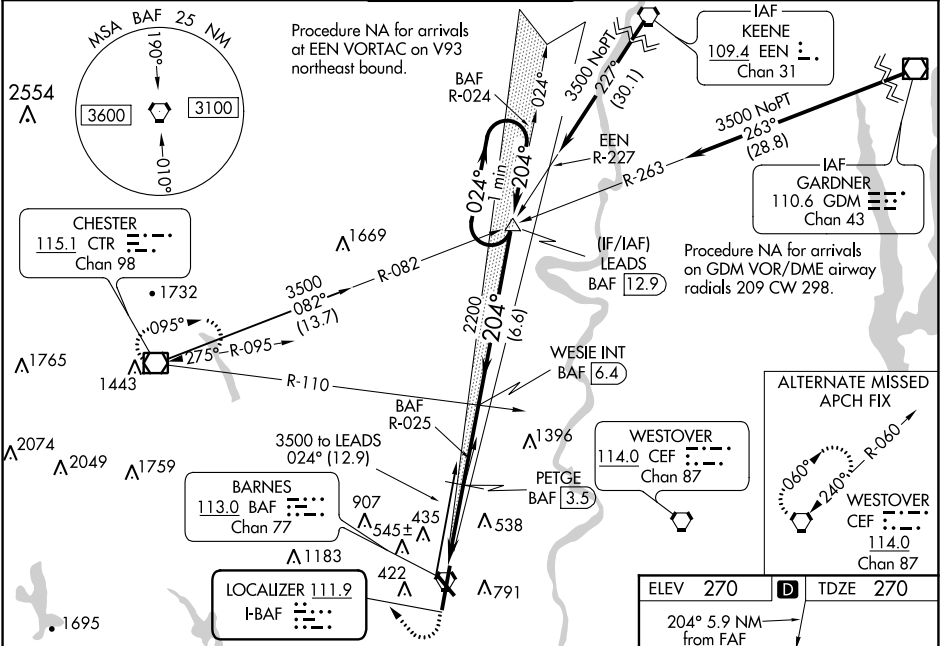
ILS or LOC RWY 20
WESTFIELD-BARNES RGNL (BAF')

⚠ When local altimeter setting not received, use Bradley Intl altimeter setting and increase all DA 44 feet and all MDA 60 feet; increase PETGE fix minimums S-LOC 20 Cats C/D/E visibility ¼ mile. For inop MALSR, increase ILS 20 Cat E visibility to RVR 4000; increase S-LOC 20 Cat E visibility to 3 miles; increase PETGE fix minimums S-LOC 20 Cat E visibility to 1½ mile. For inop MALSR when using Bradley Intl altimeter setting increase S-LOC 20 Cat E visibility to 3 miles; increase PETGE fix minimums S-LOC 20 E visibility to 3 miles. Night landing: Rwy 15 NA. ** DME from BAF VORTAC. Simultaneous reception of I-BAF and BAF DME required.

MALSR

MISSED APPROACH:
Climb to 1300 then climbing right turn to 4000 direct CTR VOR/ DME and hold, continue climb-in-hold to 4000.

ATIS 127.1 263.15	YANKEE APP CON 125.35 281.5	WESTFIELD TOWER ★ 118.9 (CTAF) 251.1	GND CON 121.7 289.4	CLNC DEL 121.7 (when tower closed)
-----------------------------	---------------------------------------	--	-------------------------------	---



1300 4000 CTR * LOC only.

BAF 0.5

PETGE BAF 3.5

WESIE INT BAF 6.4

LEADS INT BAF 12.9

One Minute Holding Pattern

024° → 3500

2200

#1260

3 NM 2.9 NM 6.6 NM

GS 3.00° TCH 50

#1320 when using Bradley Intl altimeter setting.

ELEV 270 TDZE 270

204° 5.9 NM from FAF

024°

0300' 150'

TWR 348

GS 3.00° 0.35° Up 33

316

2

REIL Rwy 15
MIRL Rwy 15-33
HIRL Rwy 2-20

Knots	60	90	120	150	180
Min:Sec	5:54	3:56	2:57	2:22	1:58

CATEGORY	A	B	C	D	E
S-ILS 20	520/24 250 (300-1½)				
S-LOC 20	1260/40 990 (1000-¾)	1260/55 990 (1000-1)	1260-2½	990 (1000-2½)	
CIRCLING	1260-1¼ 990 (1000-1¼)	1260-1½ 990 (1000-1½)	1260-3 990 (1000-3)	1660-3	1390 (1400-3)
PETGE FIX MINIMUMS **					
S-LOC 20	800/24	530 (600-½)	800/55	530 (600-1)	
CIRCLING	1160-1¼	890 (900-1¼)	1160-2¾ 890 (900-2¾)	1660-3	1390 (1400-3)

NE-1, 31 DEC 2020 to 28 JAN 2021

NE-1, 31 DEC 2020 to 28 JAN 2021