

WAAS  
CH **86218**  
**W05A**

APP CRS  
**047°**

Rwy Idg  
TDZE **53**  
Apt Elev **54**

RNAV (GPS) RWY 5

THEODORE FRANCIS GREEN STATE (PVD)

▼

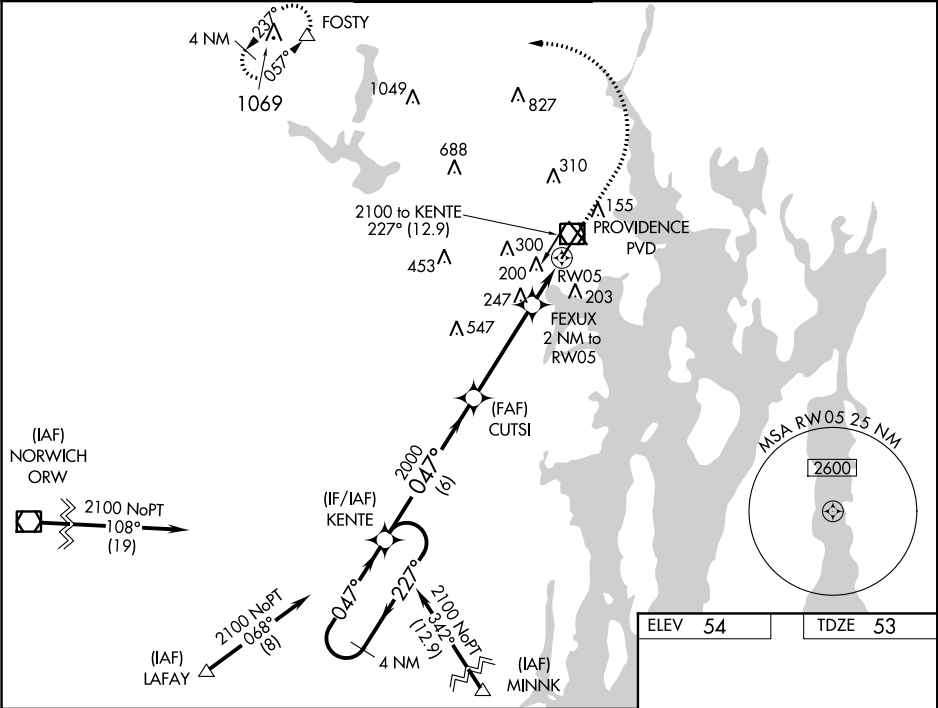
▲

For uncompensated Baro-VNAV systems, LNAV/VNAV NA below -16°C (3°F) or above 54°C (130°F). DME/DME RNP-0.3 NA. When tower closed: increase LPV, LNAV/VNAV all Cats and LNAV Cats A and B visibilities to ¾ SM, and LNAV Cats C and D visibility to 1 SM. When control tower closed: For inop ALS, increase LNAV Cats C and D visibility to 1 ¾ SM.

ALSF-2

MISSED APPROACH: Climb to 800 then climbing left turn to 2500 direct FOSTY and hold.

D-ATIS <b>124.2</b>	PROVIDENCE APP CON ★ <b>123.675 244.875</b>	PROVIDENCE TOWER ★ <b>120.7 (CTAF) 0 257.8</b>	GND CON <b>121.9 348.6</b>	CLNC DEL <b>126.65 348.6</b>
------------------------	--	---	-------------------------------	---------------------------------



4 NM Holding Pattern		KENTE		800		2500		FOSTY	
2100		227°		047°		047°		2000	
GP 3.00°		TCH 53		CUTSI		FEXUX		2 NM to RW05	
6 NM		4 NM		0.9		1.1		RW05	
CATEGORY		A		B		C		D	
LPV DA				253/18		200 (200-½)			
LNAV/VNAV DA				361/24		308 (400-½)			
LNAV MDA		460/24		407 (500-½)		460/40		407 (500-¾)	
CIRCLING		560-1 506 (600-1)		640-1 586 (600-1)		640-1½ 586 (600-1½)		860-2½ 806 (900-2½)	

