

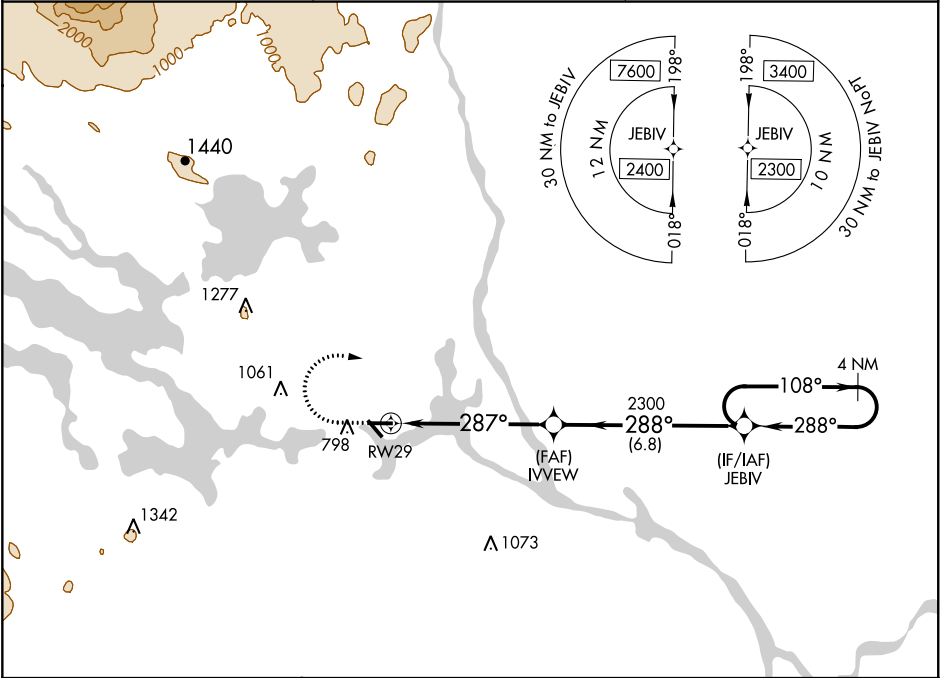
WAAS CH 53628 W29A	APP CRS 287°	Rwy Idg TDZE Apt Elev	4713 408 408
--	------------------------	-----------------------------	---

RNAV (GPS) RWY 29
MILLINOCKET MUNI (MLT)

Baro-VNAV NA when using Houlton altimeter setting. For uncompensated Baro-VNAV systems, LNAV/VNAV NA below -15°C (5°F) or above 41°C (105°F). DME/DME RNP-0.3 NA. Helicopter visibility reduction below ¾ SM NA. When local altimeter setting not received, use Houlton altimeter setting and increase all DA and all MDA 120 feet; increase LPV and LNAV/VNAV all Cats and LNAV Cat C/D visibility ¾ mile, and Circling Cat A/B visibility ½ mile and Cat C/D visibility ½ mile. Night landing: Rwy 11, 34 NA.

MISSED APPROACH:
Climb to 920 then climbing right turn to 2300 direct JEBIV and hold.

ASOS 135.225	BOSTON CENTER 120.25 346.4	UNICOM 122.8 (CTAF)
------------------------	--------------------------------------	-------------------------------



ELEV 408 TDZE 408

920 2300 JEBIV

*** LNAV only**

RWY 29 1.5 NM to RWY 29 287° IVVEW 2300 288° JEBIV 4 NM Holding Pattern 108° 2300 288° GP 3.00° TCH 51

CATEGORY	A	B	C	D
LPV DA	697-1 289 (300-1)			
LNAV/VNAV DA	815-1 407 (400-1)			
LNAV MDA	920-1	512 (600-1)	920-1½	512 (600-1½)
CIRCLING	1100-1	692 (700-1)	1100-2 692 (700-2)	1100-2¼ 692 (700-2¼)