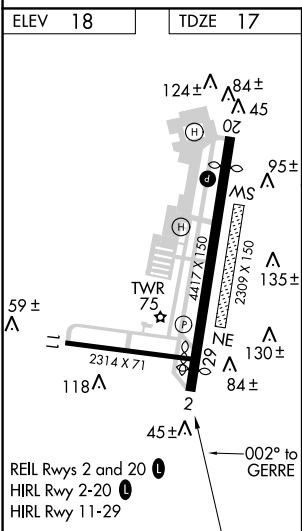
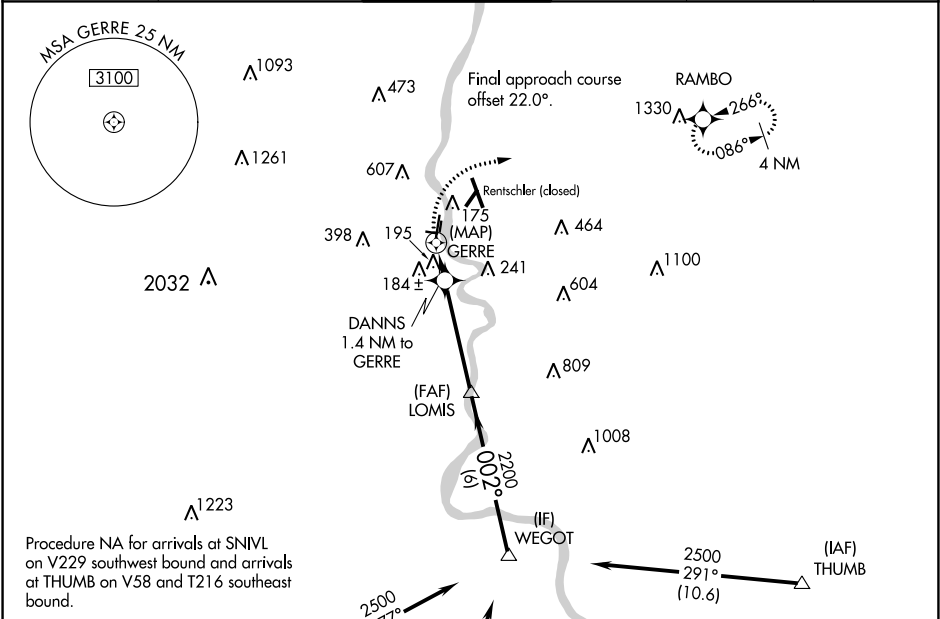


APP CRS	Rwy Idg	4006
002°	TDZE	17
	Apt Elev	18

RNAV (GPS) RWY 2
HARTFORD-BRAINARD (HFD)

RNP APCH.		MISSED APPROACH: Climbing right turn to 2500 direct RAMBO and hold.
Circling NA at night. Rwy 2 helicopter visibility reduction below 1 SM NA.		
Straight-in Rwy 2 at night, operational VGSI required, remain on or above VGSI glidepath until threshold.		

ATIS 126.45	YANKEE APP CON 127.8 269.325	BRAINARD TOWER ★ 119.6 (CTAF) 0 248.2	GND CON 121.6	CLNC DEL 121.6	UNICOM 122.95
-----------------------	--	---	-------------------------	--------------------------	-------------------------



<p>(IAF) SNIVL</p> <p>(IAF) MADISON MAD</p> <p>2500 033° (14.3)</p> <p>Procedure NA for arrival on MAD VOR/DME airway radials 317 CW 078.</p> <p>Visual Segment - Obstacles.</p> <p>2500 RAMBO</p> <p>DANNS 1.4 NM to GERRE</p> <p>LOMIS</p> <p>WEGOT 2500</p> <p>GERRE</p> <p>680</p> <p>2200</p> <p>002°</p> <p>0.3 1.4 NM 4.1 NM 6 NM</p> <table><tr><th>CATEGORY</th><th>A</th><th>B</th><th>C</th><th>D</th></tr><tr><td>LNAV MDA</td><td>460-1</td><td>443 (500-1)</td><td>460-1³/₈</td><td>443 (500-1¹/₈)</td></tr><tr><td>CIRCLING</td><td>580-1</td><td>562 (600-1)</td><td>900-2³/₄ 882 (900-2³/₄)</td><td>920-3 902 (1000-3)</td></tr></table>					CATEGORY	A	B	C	D	LNAV MDA	460-1	443 (500-1)	460-1 ³ / ₈	443 (500-1 ¹ / ₈)	CIRCLING	580-1	562 (600-1)	900-2 ³ / ₄ 882 (900-2 ³ / ₄)	920-3 902 (1000-3)
CATEGORY	A	B	C	D															
LNAV MDA	460-1	443 (500-1)	460-1 ³ / ₈	443 (500-1 ¹ / ₈)															
CIRCLING	580-1	562 (600-1)	900-2 ³ / ₄ 882 (900-2 ³ / ₄)	920-3 902 (1000-3)															

NE-1, 31 DEC 2020 to 28 JAN 2021

NE-1, 31 DEC 2020 to 28 JAN 2021