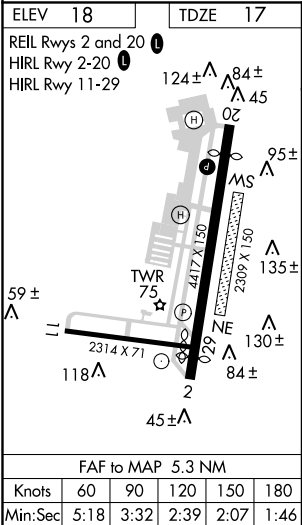
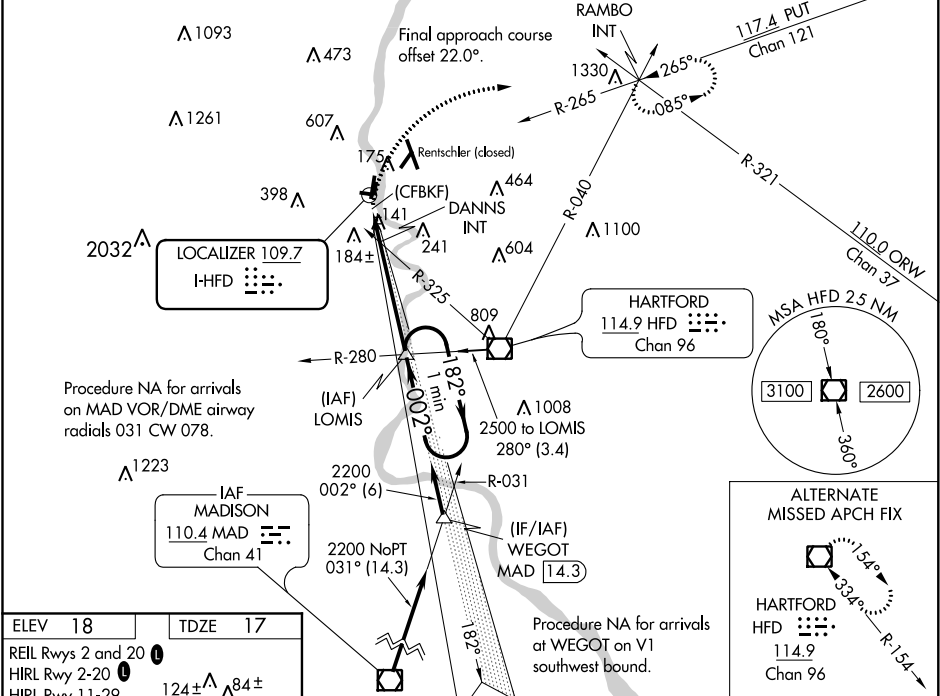


LOC I-HFD 109.7	APP CRS 002°	Rwy Idg TDZE Apt Elev 4006 17 18	LDA RWY 2 HARTFORD-BRAINARD (HFD)	
---------------------------	------------------------	--	---	--

- ▼ Helicopter visibility reduction below 1 SM NA. Night landing: Rwy 11, 20, 29 NA. Night landing: Rwy 2 operational VGSI required, remain on or above VGSI glidepath until threshold.

▲ MISSED APPROACH: Climbing right turn to 2500 on heading 090° and PUT VOR/DME R-265 to RAMBO INT and hold.

ATIS 126.45	YANKEE APP CON 127.8 269.325	BRAINARD TOWER ★ 119.6 (CTAF) 0 248.2	GND CON 121.6	CLNC DEL 121.6	UNICOM 122.95
-----------------------	--	---	-------------------------	--------------------------	-------------------------



2500		PUT R-265	RAMBO INT	VGSI and descent angles not coincident (VGSI Angle 4.00/TCH 42).	One Minute Holding Pattern
182°		002°	2200	182°	2500
0.5		1.2 NM	4.1 NM		
CATEGORY	A	B	C	D	
S-2	680-1	663 (700-1)	680-1 7/8	663 (700-1 7/8)	
CIRCLING	680-1	662 (700-1)	900-2 3/4 882 (900-2 3/4)	920-3 902 (1000-3)	
DANNIS FIX MINIMUMS (DUAL VOR RECEIVERS REQUIRED)					
S-2	460-1	443 (500-1)	460-1 3/4	443 (500-1 3/4)	
CIRCLING	580-1	562 (600-1)	900-2 3/4 882 (900-2 3/4)	920-3 902 (1000-3)	