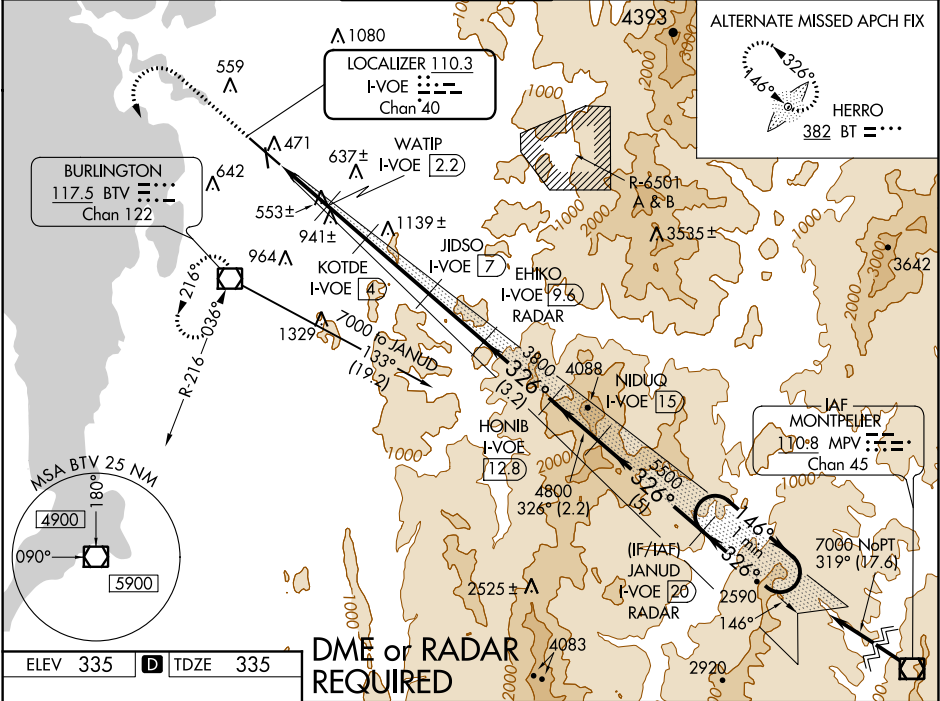


LOC/DME I-VOE 110.3 Chan 40	APP CRS 326°	Rwy Idg TDZE Apt Elev	7819 335 335
---	------------------------	-----------------------------	---

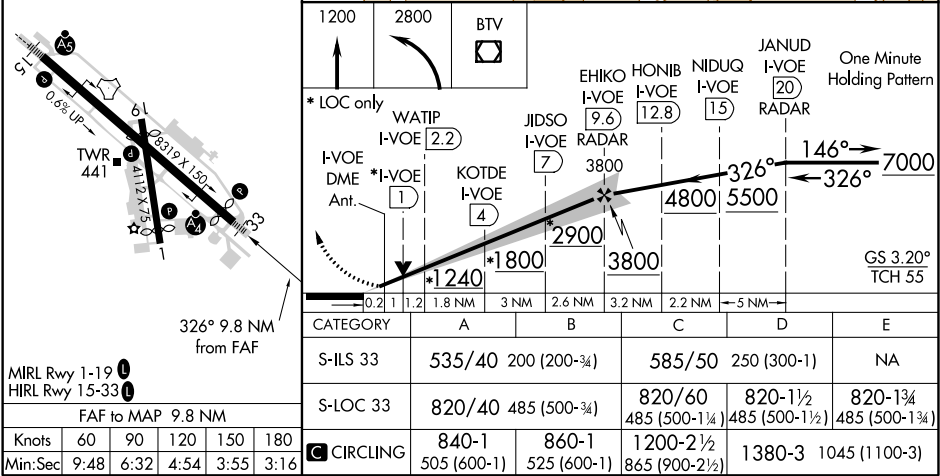
ILS or LOC/DME RWY 33
BURLINGTON INTL (BTV)

<div><div><div>V</div><div>A</div><div>-10°C</div></div><div>Circling to Rwy 1 NA at night. Inoperative table does not apply to S-LOC 33 Cats C, D, and E. Inoperative table does not apply to S-ILS all Cats. Autopilot coupled approaches NA.</div></div>		<div><div>MALSF</div><div><div><div></div><div></div><div></div></div></div></div> <div>MISSED APPROACH: Climb to 1200 then climbing left turn to 2800 direct BTV VOR/DME and hold, continue climb-in-hold to 2800.</div>			
<div>ATIS</div> <div>123.8 269.9</div>	<div>BURLINGTON APP CON ★</div> <div>121.1 278.8</div>	<div>BURLINGTON TOWER ★</div> <div>118.3 (CTAF) 0 257.8</div>	<div>GND CON</div> <div>126.3 348.6</div>	<div>CLNC DEL</div> <div>119.15</div>	<div>UNICOM</div> <div>122.95</div>



ELEV 335	D	TDZE 335
----------	----------	----------

DME or RADAR
REQUIRED



BURLINGTON, VERMONT						BURLINGTON INTL (BTV)					
Amdt 1C 23APR20						44°28'N - 73°09'W					
ILS or LOC/DME RWY 33						ILS or LOC/DME RWY 33					