



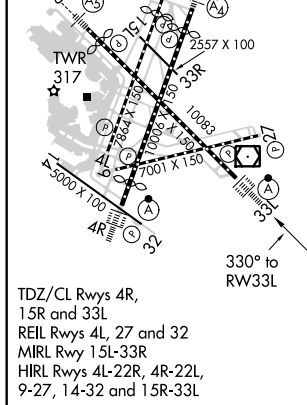
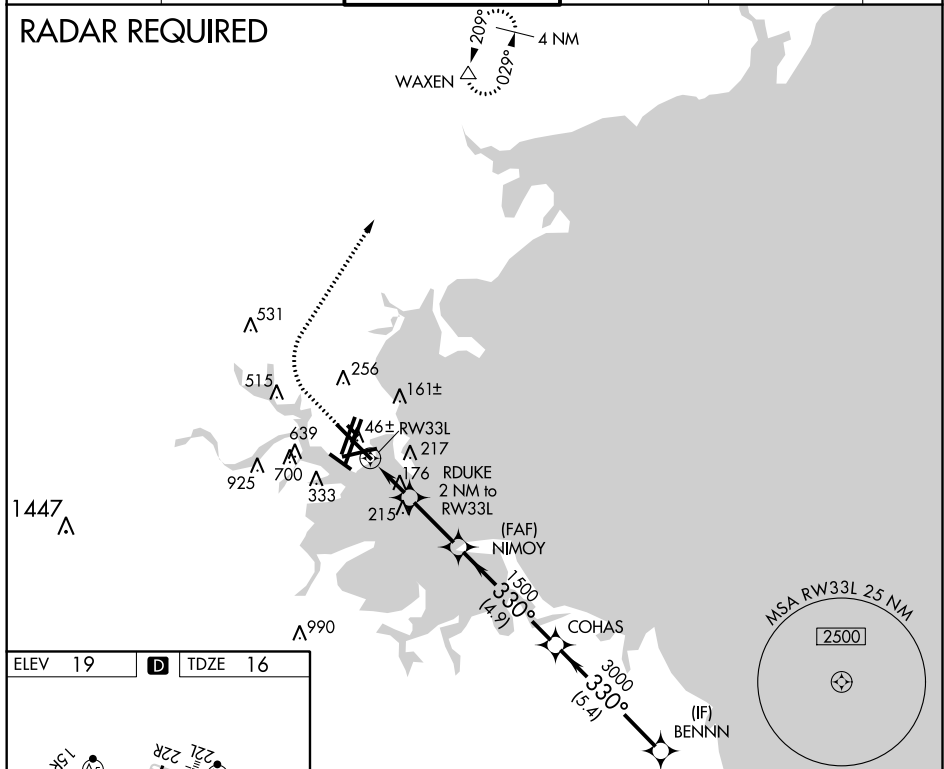
WAAS CH 69525 W33A	APP CRS 330°	Rwy Idg 10083 TDZE 16 Apt Elev 19
----------------------------------------	------------------------	--------------------------------------------------------------

RNAV (GPS) RWY 33L

GENERAL EDWARD LAWRENCE LOGAN INTL (BOS)

	DME/DME RNP-0.3 NA. Circling NA to Rwy 14. Circling NA for Cats C and D west of Rwy 4L and 15R. For uncompensated Baro-VNAV systems, LNAV/VNAV NA below -14°C (7°F) or above 54°C (130°F).				ALSF-2 	MISSED APPROACH: Climb to 600 then climbing right turn to 3000 direct WAXEN and hold.	
	D-ATIS 135.0	BOSTON APP CON 120.6 263.1		BOSTON TOWER 128.8 257.8 (WEST) 132.225 257.8 (EAST)	GND CON 121.9 121.75	CLNC DEL 121.65 257.8	CPDLC

RADAR REQUIRED



600 ↑	3000 ↗	WAXEN △	VGSI and RNAV glidepath not coincident (VGSI Angle 3.00°/TCH 68).				BENNN
*RNAV only	*1.1 NM to RW33L	RDUKE 2 NM to RW33L	NIMOY 1500	COHAS 1500	330°	4000	GP 3.00° TCH 57
1.1 NM		0.9 NM	2.5 NM	4.9 NM	5.4 NM		
CATEGORY	A		B	C		D	
LPV DA			216/18	200 (200-½)			
RNAV/ VNAV	DA		324/24	308 (400-½)			
RNAV MDA	440/24		424 (500-½)	440/40		424 (500-¾)	
CIRCLING	960-1¼ 941 (1000-1¼)		1060-1½ 1041 (1100-1½)	640-1¾ 621 (700-1¾)		640-2 621 (700-2)	

RNAV (GPS) RWY 33L