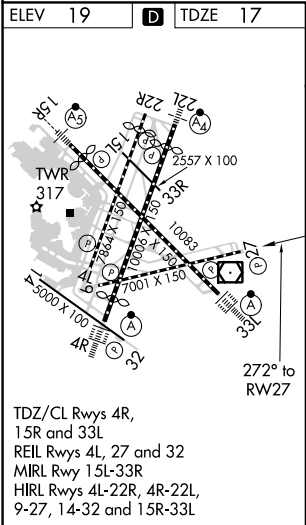
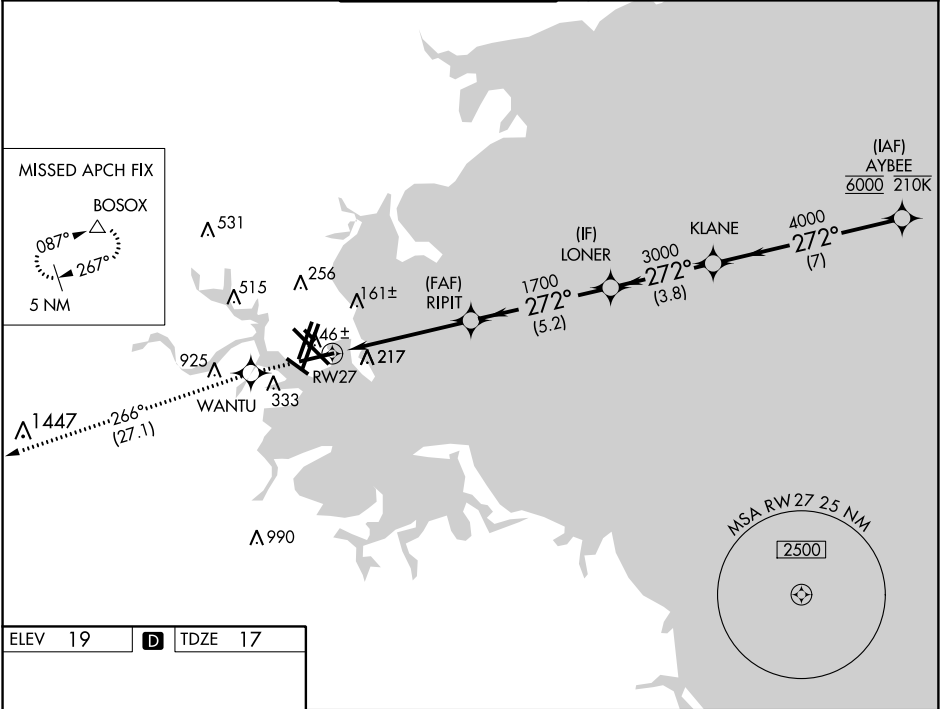


APP CRS	Rwy Idg	7001
272°	TDZE	17
	Apt Elev	19

RNAV (GPS) RWY 27
GENERAL EDWARD LAWRENCE LOGAN INTL (BOS)

RNP APCH.		MISSED APPROACH: Climb to 3000 direct WANTU and on track 266° to BOSOX and hold.			
For uncompensated Baro-VNAV systems, LNAV/VNAV NA below -1.5°C or above 54°C. Circling NA to Rwy 14. Circling NA for Cats C and D west of Rwys 4L and 15R.					
D-ATIS	BOSTON APP CON	BOSTON TOWER	GND CON	CLNC DEL	CPDLC
135.0	120.6 263.1	128.8 257.8 (WEST) 132.225 257.8 (EAST)	121.9 121.75	121.65 257.8	



ELEV 19	D	TDZE 17				
3000		WANTU	tr 266°	BOSOX	VGSI and RNAV glidepath not coincident (VGSI Angle 3.00/TCH 71).	
* LNAV only.		RIPIT	LONER	KLANE	272°	6000
* 1.7 NM to RWY 27		1700	3000	4000	GP 3.00° TCH 57	
1.7 NM		3.4 NM	5.2 NM	3.8 NM	7 NM	
CATEGORY	A		B		C	D
LNAV/VNAV DA	510-1 3/8		493 (500-1 3/8)			
LNAV MDA	640-1 1/2 623 (700-1 1/2)		640-1 3/4 623 (700-1 3/4)			
CIRCLING	940-1 1/4 921 (1000-1 1/4)		1040-1 1/2 1021 (1100-1 1/2)		620-1 3/4 601 (700-1 3/4)	620-2 601 (700-2)