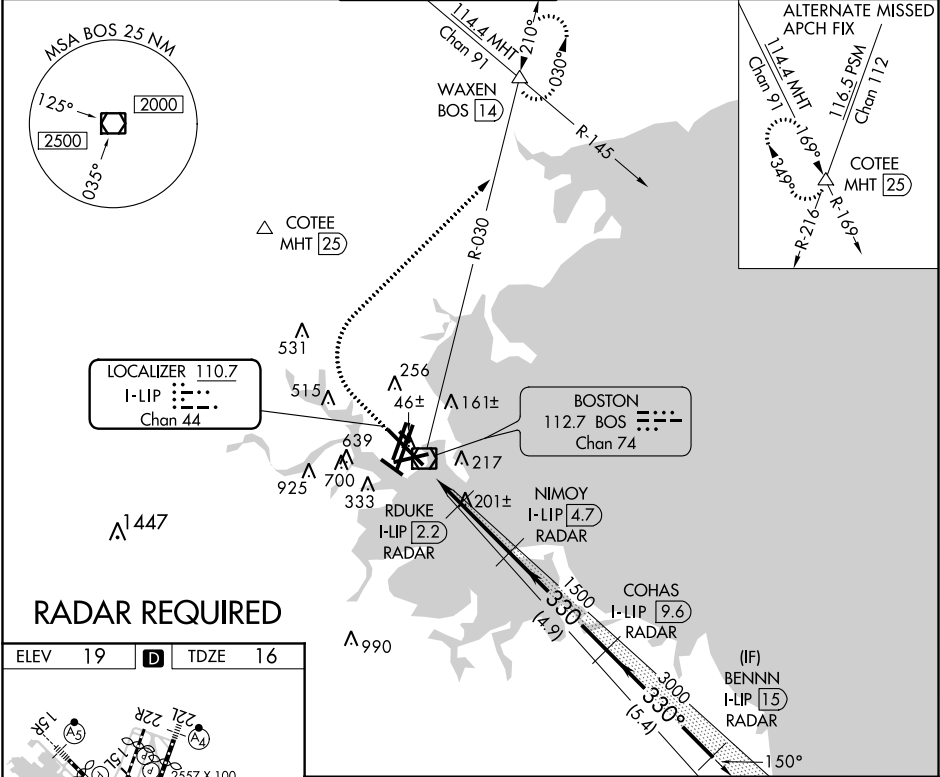


LOC/DME I-LIP	APP CRS	Rwy Idg	10083
110.7	330°	TDZE	16
Chan 44		Apt Elev	19

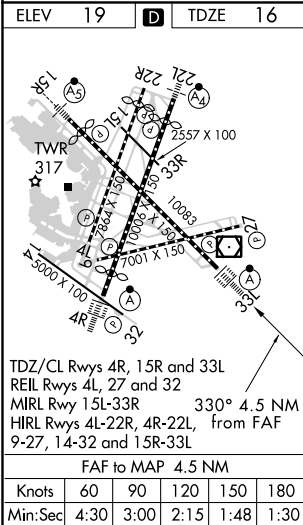
ILS or LOC RWY 33L
GENERAL EDWARD LAWRENCE LOGAN INTL (BOS)

<div><div>▼</div><div>▲</div></div> <div>DME or RADAR required. Circling NA for Cats C and D west of Rwy 4L and 15R. Circling NA to Rwy 14.</div>	ALSF-2	MISSED APPROACH: Climb to 1500 then climbing right turn to 3000 on BOS VOR/DME R-030 to WAXEN INT/BOS 14 DME and hold.
---	--------	--

D-ATIS	BOSTON APP CON	BOSTON TOWER	GND CON	CLNC DEL	CPDLC
135.0	120.6 263.1	128.8 257.8 (WEST) 132.225 257.8 (EAST)	121.9 121.75	121.65 257.8	



RADAR REQUIRED



1500	3000	WAXEN	VGSi and ILS glidepath not coincident (VGSi Angle 3.00/TCH 68).	BENNN
↑	BOS R-030	△		I-LIP 15
* LOC only.	RDUKE	NIMOY	COHAS	RADAR
I-LIP 0.2	I-LIP 2.2	I-LIP 4.7	I-LIP 9.6	
* I-LIP 1.4	I-LIP 1.4	1500	3000	4000
1.2 NM	0.8 NM	2.5 NM	4.9 NM	5.4 NM
CATEGORY	A	B	C	D
S-ILS 33L	216/18 200 (200-½)			
S-LOC 33L	460/24	444 (500-½)	460/45	444 (500-¾)
CIRCLING	960-1¼ 941 (1000-1¼)	1060-1½ 1041 (1100-1½)	640-1¾ 621 (700-1¾)	640-2 621 (700-2)