

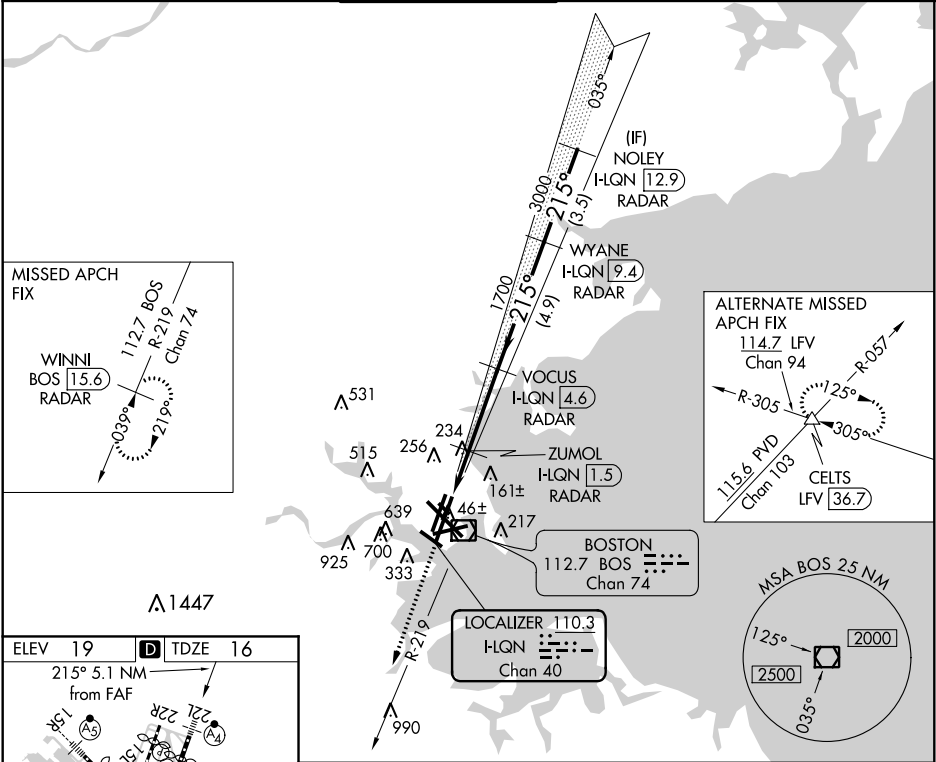


LOC/DME I-LQGN	APP CRS	Rwy Idg	8806
110.3	215°	TDZE	16
Chan 40		Apt Elev	19

ILS or LOC RWY 22L
GENERAL EDWARD LAWRENCE LOGAN INTL (BOS)

RADAR required for procedure entry. DME or RADAR required.				MALSF 	MISSED APPROACH: Climb to 3000 on BOS VOR/DME R-219 to WINNI/ BOS 15.6 DME/RADAR and hold.		
	Inop table does not apply to S-ILS 22L. Circling NA for Cats C and D west of Rwy 4L and 15R. Circling NA to Rwy 14.						
D-ATIS 135.0	BOSTON APP CON 120.6 263.1	BOSTON TOWER 128.8 257.8 (WEST) 132.225 257.8 (EAST)	GND CON 121.9 121.75	CLNC DEL 121.65 257.8		CPDLC	



ELEV 19	TDZE 16
215° 5.1 NM from FAF	
15R 33L	
REIL Rwy 4L, 27 and 32	
MIRL Rwy 15L-33R	
HIRL Rwy 4L-22R, 9-27, 14-32 and 15R-33L	
FAF to MAP 5.1 NM	
Knots	60 90 120 150 180
Min:Sec	5:06 3:24 2:33 2:02 1:42

3000	WINNI BOS 15.6	VGSI and ILS glidepath not coincident (VGSI Angle 3.00/TCH 71).	WYANE I-LQGN 9.4	NOLLY I-LQGN 12.9
BOS R-219				
*LOC only.				
I-LQGN DME ANT.	*I-LQGN 0.9	1700	1700	4000
				GS 3.00° TCH 55
	1.4 NM	0.6	3.1 NM	4.9 NM
CATEGORY	A	B	C	D
S-ILS 22L	216/40 200 (200-¾)			
S-LOC 22L	540/40	524 (600-¾)	540-1¼	524 (600-1¼)
CIRCLING	960-1¼ 941 (1000-1¼)	1060-1½ 1041 (1100-1½)	640-1¾ 621 (700-1¾)	640-2 621 (700-2)

NE-1, 31 DEC 2020 to 28 JAN 2021

NE-1, 31 DEC 2020 to 28 JAN 2021