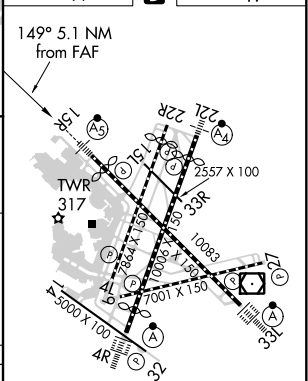
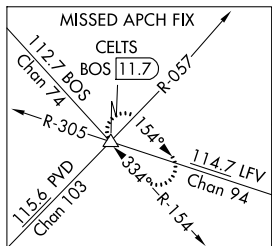
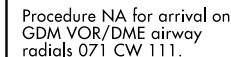


ILS or LOC RWY 15R  
GENERAL EDWARD LAWRENCE LOGAN INTL (BOS)

MALSR

**MISSED APPROACH:** Climb to 3000 on BOS VOR/DME R-154 to CELTS INT/BOS 11.7 DME and hold.

---



	4.8 NM		4.1 NM		4.7 NM		0.4
CATEGORY	A		B		C		D
S-ILS 15R	267/24 250 (300-½)						
S-LOC 15R	580/24 563 (600-½)		580-1¼ 563 (600-1¼)		580-2¼ 563 (600-2¼)		
<b>C</b> CIRCLING	940-1¼ 921 (1000-1¼)	1040-1½ 1021 (1100-1½)	620-1¾ 601 (700-1¾)		620-2 601 (700-2)		

TDZ/CL Rwy 4R, 15R and 33L  
REIL Rwy 4L, 27 and 32  
MIRL Rwy 15L-33R  
HIRL Rwy 4L-22R, 4R-22L,  
9-27, 14-32 and 15R-33L

42°22'N-71°00'W

ILS or LOC RWY 15R

NE-1, 31 DEC 2020 to 28 JAN 2021