


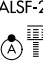
LOC/DME I-JVH	APP CRS	Rwy Idg	11440
109.5	150°	TDZE	192
Chan 32		Apt Elev	192

ILS Y or LOC Y RWY 15
BANGOR INTL (BGR)



ASR

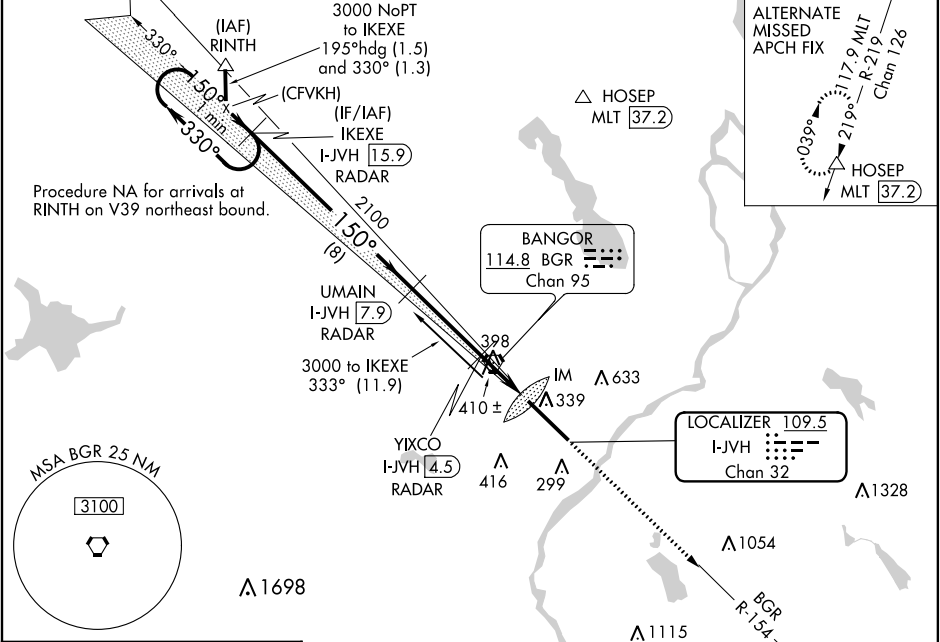
Circling NA NE of Rwy 15-33. DME or RADAR required. For inoperative ALS, increase S-ILS 15 Cat E visibility to RVR 4000, and S-LOC 15 Cat C/D/E visibility to 1 1/2 SM.



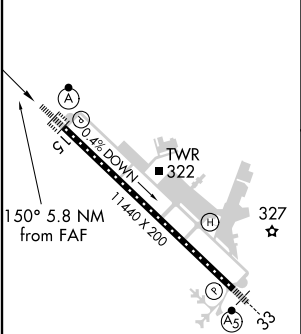
ALSF-2

MISSED APPROACH: Climb to 3000 on heading 150° and BGR VORTAC R-154 to ELSUH/BGR 18.3 DME/RADAR and hold.

ATIS 127.75	BANGOR APP CON 118.925 239.3	BANGOR TOWER 120.7 233.7	GND CON 121.9 348.6	CLNC DEL 135.9 348.6
----------------	---------------------------------	-----------------------------	------------------------	-------------------------



ELEV 192	D	TDZE 192
----------	---	----------



DME or RADAR REQUIRED

One Minute Holding Pattern	IKEXE I-JVH 15.9 RADAR	3000	hdg 150°	BGR R-154	ELSUH BGR 18.3 RADAR
3000	330°	150°	150°	2100	2100
GS 3.00° TCH 50	VGSI and ILS glidepath not coincident (VGSI Angle 3.00/TCH 55).	2100	2100	1000	1000
		8 NM	3.4 NM	1.1	1.2
				0.1	0.1
CATEGORY	A	B	C	D	E
S-ILS 15			392/18	200 (200-1/2)	
S-LOC 15	660/24	468 (500-1/2)	660/50	468 (500-1)	
	660-1	720-1	740-1 1/2	820-2	880-2 1/2
	468 (500-1)	528 (600-1)	548 (600-1 1/2)	628 (700-2)	688 (700-2 1/2)
CIRCLING					

NE-1, 31 DEC 2020 to 28 JAN 2021

NE-1, 31 DEC 2020 to 28 JAN 2021