

BANGOR, MAINE

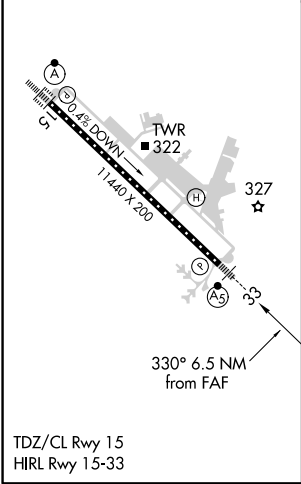
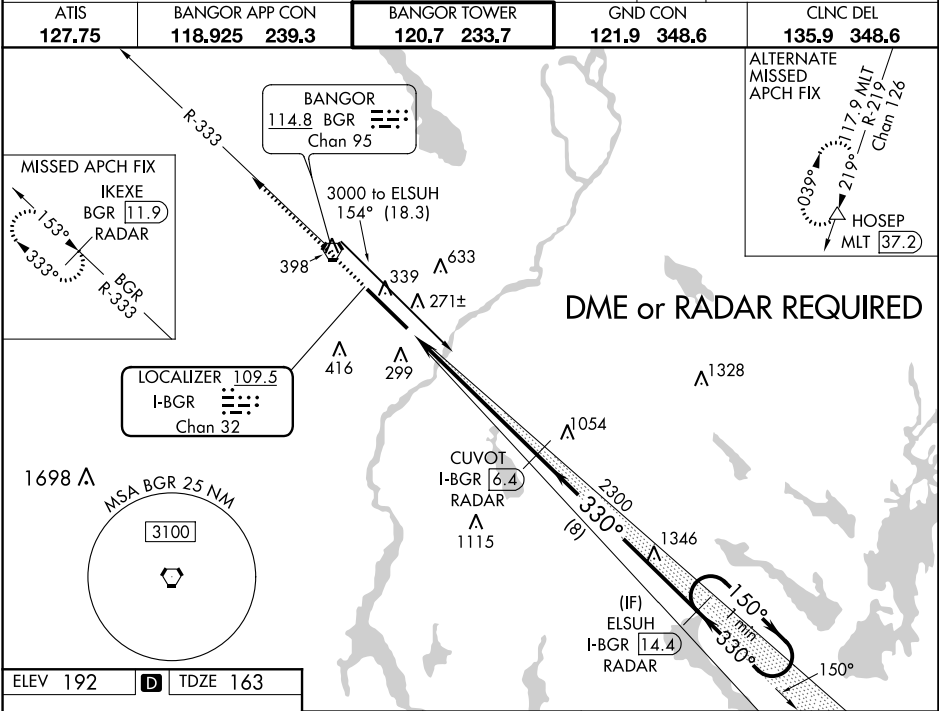
AL-39 (FAA)

19171

LOC/DME I-BGR	APP CRS	Rwy Idg	11440
109.5	330°	TDZE	163
Chan 32		Apt Elev	192

ILS RWY 33 (SA CAT I & II)
BANGOR INTL (BGR)

ATIS 127.75	BANGOR APP CON 118.925 239.3	BANGOR TOWER 120.7 233.7	GND CON 121.9 348.6	CLNC DEL 135.9 348.6
SA CAT I: Requires specific OPSPEC, MSPEC, or LOA approval and use of HUD to DH. SA CAT II: Reduced lighting: requires specific OPSPEC, MSPEC, or LOA approval and use of Autoland or HUD to touchdown.			MALS R	MISSED APPROACH: Climb to 3000 on heading 330° and on BGR VORTAC R-333 to IKEXE/BGR VORTAC 11.9 DME/RADAR and hold.



3000	hdg 330°	BGR R-333	IKEXE BGR 11.9 RADAR		CUVOT I-BGR 6.4 RADAR		ELSUH I-BGR 14.4 RADAR		One Minute Holding Pattern

BANGOR, MAINE
Amdt 13 27APR17

44°48'N-68°50'W

BANGOR INTL (BGR)
ILS RWY 33 (SA CAT I & II)

NE-1, 31 DEC 2020 to 28 JAN 2021

NE-1, 31 DEC 2020 to 28 JAN 2021