

BANGOR, MAINE

HI-VOR/DME or TACAN RWY 33

VORTAC BGR 114.8 Chan 95	APCH CRS 335°	Rwy ldg 11,440 TDZE 163 Arpt Elev 192
----------------------------------------------	-------------------------	------------------------------------------------------------------

JAL-39 [USAF]

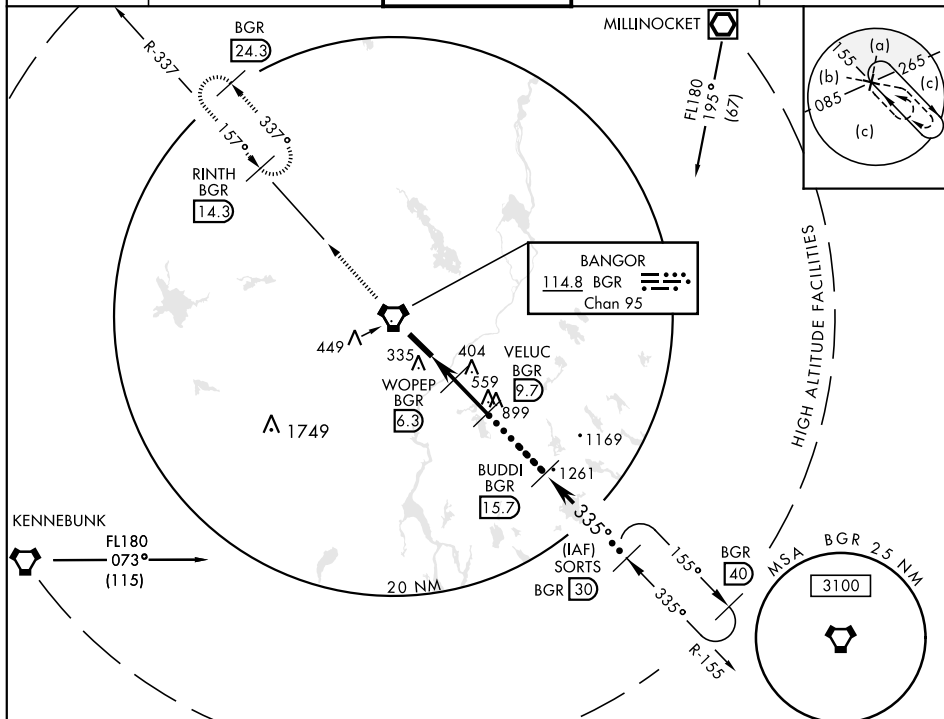
BANGOR INTL (KBGR)

▼ * When ALS inop, increase CAT C RVR to 60 and vis to 1¼ miles, CAT D/E vis to 1½ miles.
 ** Circling not authorized NE of Rwy 15-33.

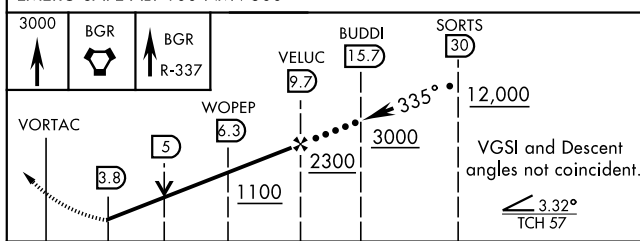


MISSED APPROACH: Climb to 3000 direct BGR VORTAC then via BGR R-337 to RINTH (BGR 14.3 DME) and hold.

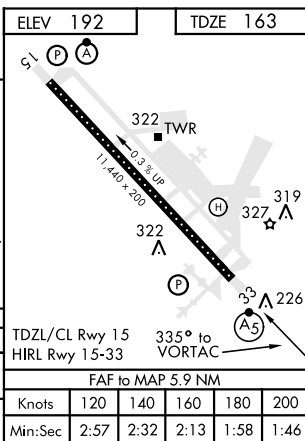
ATIS 127.75	BANGOR APP CON 118.925 239.3	BANGOR TOWER 120.7 233.7	GND CON 121.9 348.6	ASR
-----------------------	----------------------------------------	------------------------------------	-------------------------------	-----



EMERG SAFE ALT 100 NM 7500



CATEGORY	C	D	E
S-33 *	600/40 437 (500-¾)	600/50 437 (500-1)	
CIRCLING **	660-1½ 468 (500-1½)	760-2 568 (600-2)	



BANGOR, MAINE

44°48'N-68°50'W

BANGOR INTL (KBGR)

Amdt 4 14261

HI-VOR/DME or TACAN RWY 33

NE-1, 31 DEC 2020 to 28 JAN 2021