

BANGOR, MAINE

HI-VOR/DME or TACAN RWY 15

VORTAC BGR 114.8 Chan 95	APCH CRS 157°	Rwy ldg 11,440 TDZE 192 Arprt Elev 192
--	-------------------------	---

JAL-39 [USAF]

BANGOR INTL (KBGR)

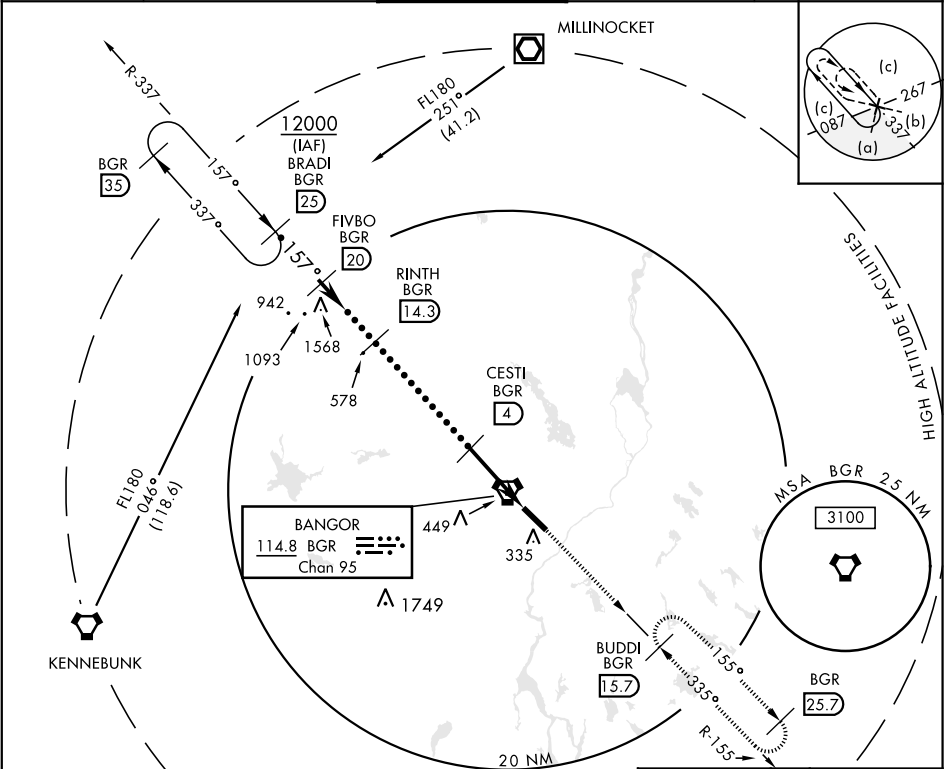
✦ * When ALS inop, increase CAT E vis to 1¾ miles.

** Circling not authorized NE of Rwy 15-33.

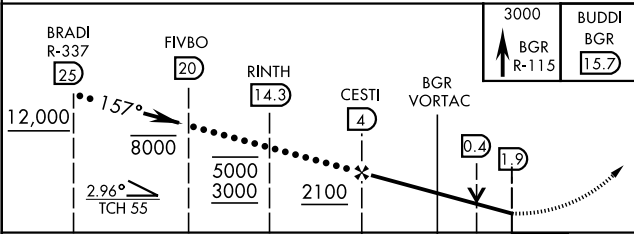
ALSF-2

MISSED APPROACH: Climb to 3000 via BGR VORTAC R-155 to BUDDI (R-155/15.7 DME) and hold.

ATIS 127.75	BANGOR APP CON 118.925 239.3	BANGOR TOWER 120.7 233.7	GND CON 121.9 348.6	ASR
-----------------------	--	------------------------------------	-------------------------------	-----



EMERG SAFE ALT 100 NM 7500



CATEGORY	C	D	E
S-15 *	720/50 528 (600-1)	720/60 528 (600-1¼)	
CIRCLING **	720-1½ 528 (600-1½)	760-2 568 (600-2)	

ELEV 192 TDZE 192

157° 1.9 NM From VORTAC

322 TWR

322 A

327 H

327 S

226 A

226 A

TDZL/CL Rwy 15

HIRL Rwy 15-33

FAF to MAP 5.9 NM

Knots	120	140	160	180	200
Min:Sec	2:57	2:32	2:13	1:58	1:46

BANGOR, MAINE

44°48'N-68°50'W

BANGOR INTL (KBGR)

Amtd 3 14261

HI-VOR/DME or TACAN RWY 15