

WAAS CH <b>86409</b> <b>W36A</b>	APP CRS <b>004°</b>	Rwy Idg TDZE <b>776</b> Apt Elev <b>777</b>
--	------------------------	---

RNAV (GPS) RWY 36

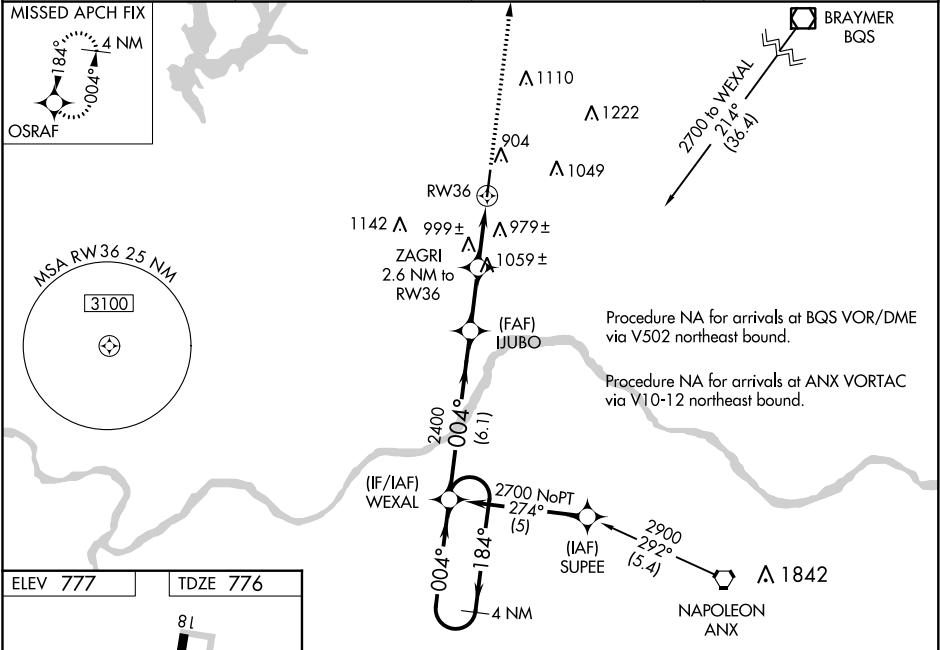
MIDWEST NATIONAL AIR CENTER (GPH)

NA

DME/DME RNP-0.3 NA. Baro-VNAV NA when using Kansas City Intl altimeter setting. For uncompensated Baro-VNAV systems, LNAV/VNAV NA below -16°C (4°F) or above 54°C (130°F). Visibility reduction by helicopters NA. Obtain local altimeter setting on CTAF; when not received use Kansas City Intl altimeter setting and increase all DA 79 feet and all LPV and LNAV/VNAV visibilities ¼ mile; increase all MDA 80 feet and LNAV and Circling Cat C visibility ¼ mile. VDP NA when using Kansas City Intl altimeter setting.

MISSED APPROACH: Climb to 2700 direct OSRAF and hold.

AWOS-3 <b>120.275</b>	KANSAS CITY APP CON <b>118.4 307.35</b>	CLNC DEL <b>118.2</b>	UNICOM <b>122.7 (CTAF) 0</b>
--------------------------	--	--------------------------	---------------------------------



4 NM Holding Pattern		WEXAL	IJUBO	ZAGRI 2.6 NM to RW36	2700	OSRAF
2700		184°	004°	004°	2400	*1640
GP 3.00° TCH 45				*1.4 NM to RW36		
		6.1 NM	2.3 NM	1.2	1.4 NM	
CATEGORY	A	B	C	D		
LPV DA	1105-1¼		329 (400-1¼)		NA	
LNAV/ VNAV DA	1341-2		565 (600-2)		NA	
LNAV MDA	1260-1	484 (500-1)		1260-1¼	484 (500-1¼)	NA
CIRCLING	1300-1	523 (600-1)		1320-1½	543 (600-1½)	NA