

WAAS CH <b>53403</b> <b>W18A</b>	APP CRS <b>180°</b>	Rwy Idg TDZE <b>1314</b> Apt Elev <b>1314</b>	<b>5000</b> <b>1314</b> <b>1314</b>
--	------------------------	---	---

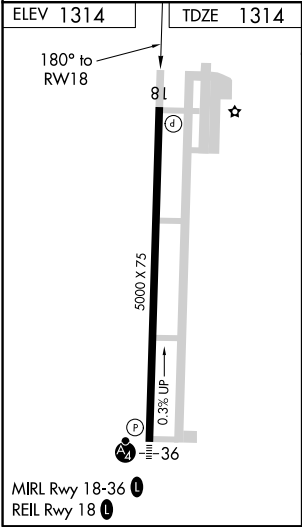
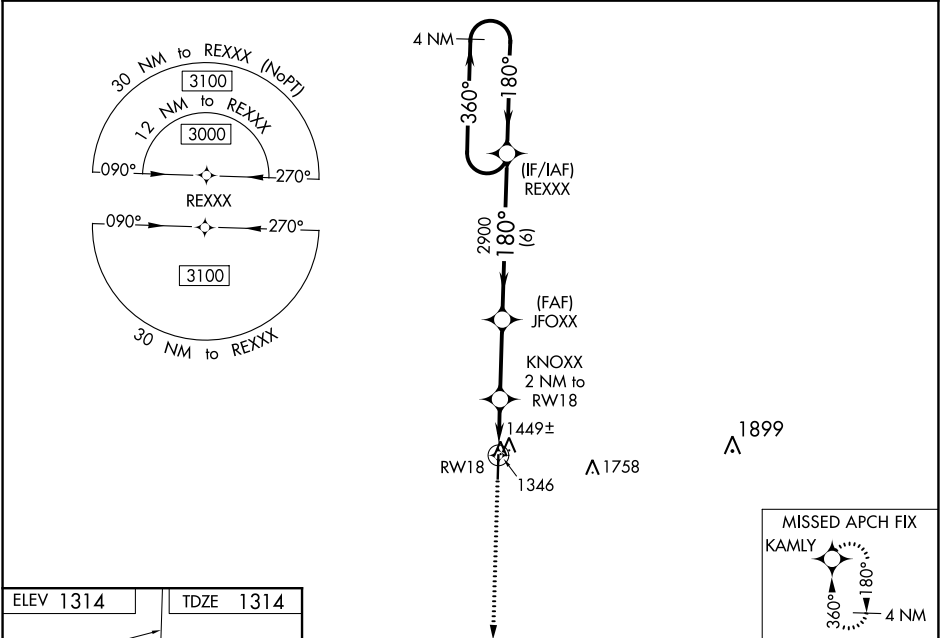
RNAV (GPS) RWY 18

MONETT RGNL (HFJ)

▼ Baro-VNAV NA when using Joplin Rgnl altimeter setting. For uncompensated Baro-VNAV systems, LNAV/VNAV NA below -17°C (2°F) or above 54°C (130°F). When local altimeter setting not received, use Joplin Rgnl altimeter setting: increase all DA 111 feet and all MDA 120 feet; increase LPV visibility All Cats to 1¼; LNAV/VNAV all Cats and LNAV Cats C visibility to 1¾ and Circling Cat C visibility to 2. DME/DME RNP-0.3 NA.

MISSED APPROACH:  
Climb to 3100 direct KAMLY and hold.

AWOS-3 <b>118.275</b>	SPRINGFIELD APP CON <b>124.95 318.2</b>	CLNC DEL <b>121.85</b>	UNICOM <b>123.075 (CTAF) 1</b>
--------------------------	--	---------------------------	-----------------------------------



3100 KAMLY VGSi and RNAV glidepath not coincident.				4 NM Holding Pattern	
*LNAV only.		KNOXX 2 NM to RW18	JFOXX 2900	REXXX	
RW18		*1980	2900	360° 3000 180° 180°	
2 NM		2.9 NM	6 NM	GP 3.00° TCH 43	
CATEGORY	A	B	C	D	
LPV DA	1564-¾	250 (300-¾)	1564-1 250 (300-1)	NA	
LNAV/VNAV DA	1619-1		305 (400-1)	NA	
LNAV MDA	1700-1		386 (400-1)	NA	
CIRCLING	1760-1 446 (500-1)	1900-1 586 (600-1)	1900-1½ 586 (600-1½)	NA	

NC-3, 31 DEC 2020 to 28 JAN 2021

NC-3, 31 DEC 2020 to 28 JAN 2021