

WAAS CH 58107 W13A	APP CRS 129°	Rwy Idg TDZE Apt Elev	5000 1005 1008
--	------------------------	-----------------------------	---

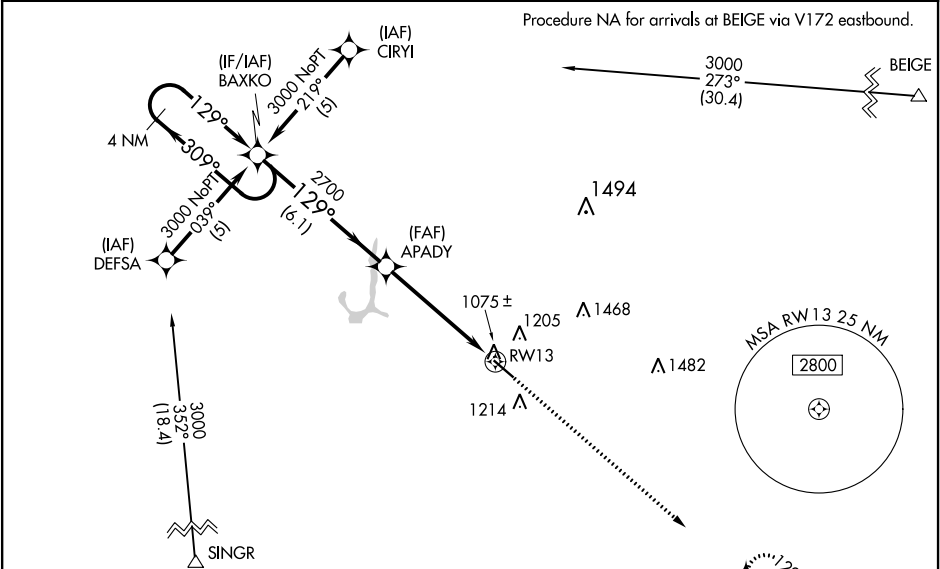
RNAV (GPS) RWY 13

GRINNELL RGNL (GGI)

⚠ When local altimeter setting not received, use Newton altimeter setting and increase all DAs 38 feet and all MDAs 40 feet, increase LPV and LNAV/VNAV visibility ¼ mile all Cats and LNAV Cat C visibility ¼ mile. Baro-VNAV NA when using Newton altimeter setting.
For uncompensated Baro-VNAV systems, LNAV/VNAV NA below -17°C (2°F) or above 54°C (130°F).
Visibility reduction by helicopters NA. DME/DME RNP-0.3 NA.

MISSED APPROACH: Climb to 3000 direct PICRA and hold.

AWOS-3 120.725	CHICAGO CENTER 127.05 319.8	UNICOM 122.8 (CTAF) 0
--------------------------	---------------------------------------	--



ELEV 1008	TDZE 1005
-----------	-----------

129° to RWY 13

0.4% UP

5200 X 75

REIL Rwy 13 and 31 **0**

MIRL Rwy 13-31 **0**

4 NM Holding Pattern				3000	PICRA
GP 3.00° TCH 34					
				6.1 NM	5.2 NM
CATEGORY	A	B	C	D	
LPV DA	1284-1 279 (300-1)			NA	
LNAV/VNAV DA	1415-1½ 410 (500-1½)			NA	
LNAV MDA	1480-1	475 (500-1)	1480-1¼ 475 (500-1¼)	NA	
CIRCLING	1620-1	612 (700-1)	1620-1¾ 612 (700-1¾)	NA	