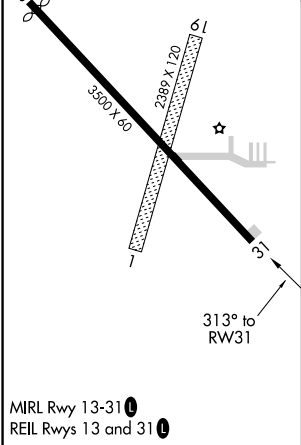
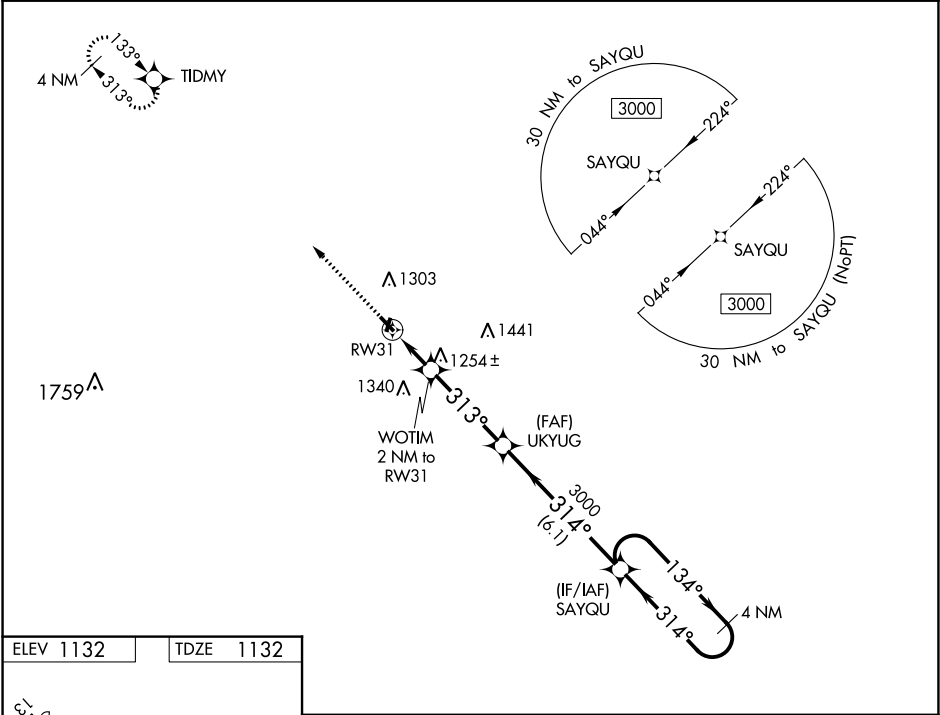


WAAS CH 72634 W31A	APP CRS 313°	Rwy Idg TDZE 1132 Apt Elev 1132
--	------------------------	---

RNAV (GPS) RWY 31
EAGLE GROVE MUNI (EAG)

 NA	DME/DME RNP-0.3 NA. Use Clarion altimeter setting, when not received, use Fort Dodge altimeter setting and increase all DA and MDA 20 feet, increase all LPV and LNAV/VNAV Cats visibilities 1/8 mile. Helicopter visibility reduction below 3/4 SM NA. Baro-VNAV NA. Night Landing: Rwy 13 NA. Circling NA to Rwys 1 and 19.	MISSED APPROACH: Climb to 3000 direct TIDMY and hold.
---------------	---	--

CAV AWOS-3 126.575	MINNEAPOLIS CENTER 134.0 288.3	UNICOM 122.8 (CTAF) 0
------------------------------	--	---------------------------------



3000	TIDMY	UKYUG	SAYQU	4 NM Holding Pattern
* LNAV only.	WOTIM 2 NM to RW31	3000	314°	3000
	RW31	*1800	314°	GP 3.00° TCH 40
	2 NM	3.8 NM	6.1 NM	
CATEGORY	A	B	C	D
LPV DA	1510-1¼	378 (400-1¼)		NA
LNAV/VNAV DA	1575-1½	443 (500-1½)		NA
LNAV MDA	1540-1	408 (500-1)		NA
CIRCLING	1660-1	528 (600-1)		NA

NC-3, 31 DEC 2020 to 28 JAN 2021

NC-3, 31 DEC 2020 to 28 JAN 2021