

WAAS CH 72807 W14A	APP CRS 143°	Rwy Idg TDZE Apt Elev	4600 1142 1145
--	------------------------	-----------------------------	---

RNAV (GPS) RWY 14

NORTHWEST MISSOURI RGNL (EVU)

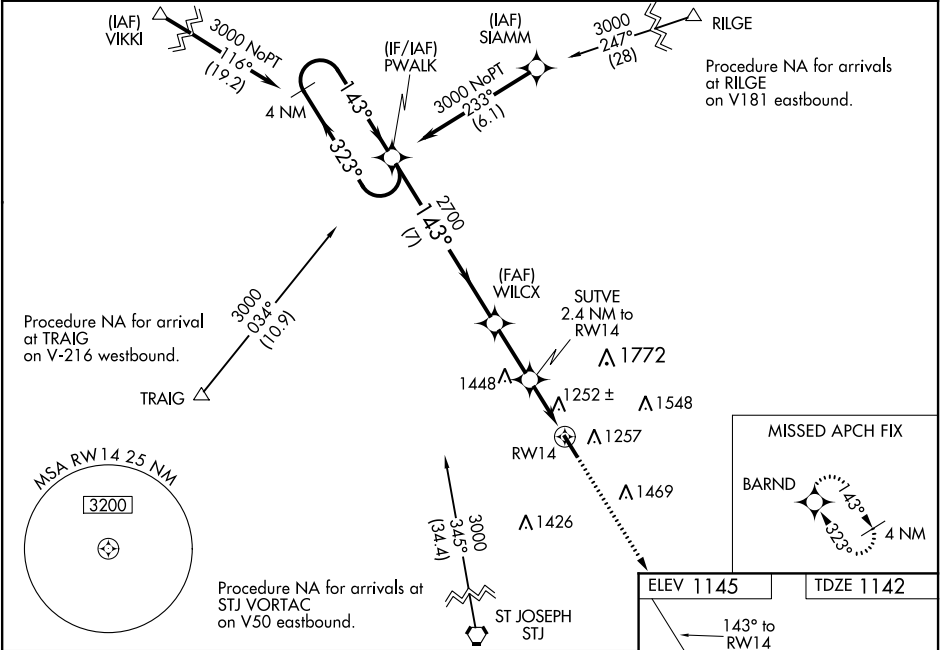
▼

▲ NA

Baro-VNAV NA when using St. Joseph altimeter setting. For uncompensated Baro-VNAV systems, LNAV/VNAV NA below -17°C (2°F) or above 54°C (130°F). DME/DME RNP-0.3 NA. Visibility reduction by helicopters NA. When local altimeter setting not received, use St. Joseph altimeter setting and increase LPV DA to 1513 feet, LNAV/VNAV DA to 1678 feet, and all MDA 140 feet, increase LPV visibility ½ mile all Cats, LNAV/VNAV visibility ½ mile all Cats and LNAV Cat C ¾ mile. Circling NA east of Rwy 14-32. When VGSI inop, Straight-in/Circling Rwy 14 procedure NA at night.

MISSED APPROACH:
Climb to 3000 direct BARND and hold.

AWOS-3PT 118.225	MINNEAPOLIS CENTER 119.6 290.4	UNICOM 122.8 (CTAF) ①
----------------------------	--	---------------------------------



4 NM Holding Pattern PWALK				
VGSI and RNAV glidepath not coincident (VGSI Angle 3.00/TCH 34).				
GP 3.00° TCH 40				
7 NM 2.4 NM 2.4 NM				
CATEGORY	A	B	C	D
LPV DA	1392-1	250 (300-1)		NA
LNAV/VNAV DA	1557-1 ¾	415 (500-1 ¾)		NA
LNAV MDA	1520-1	378 (400-1)	1520-1 ⅛ 378 (400-1 ⅛)	NA
CIRCLING	1540-1 395 (400-1)	1600-1 455 (500-1)	1600-1 ½ 455 (500-1 ½)	NA

