

| | | |
|--|------------------------|---|
| WAAS CH 45837 W14A | APP CRS 143° | Rwy Idg TDZE 1155 Apt Elev 1157 |
|--|------------------------|---|

RNAV (GPS) RWY 14

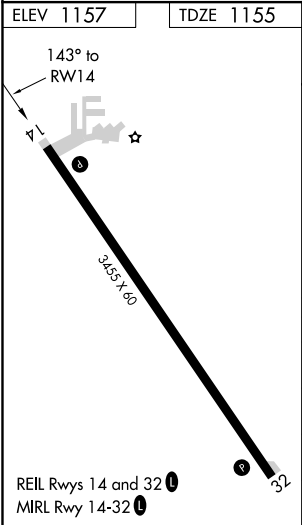
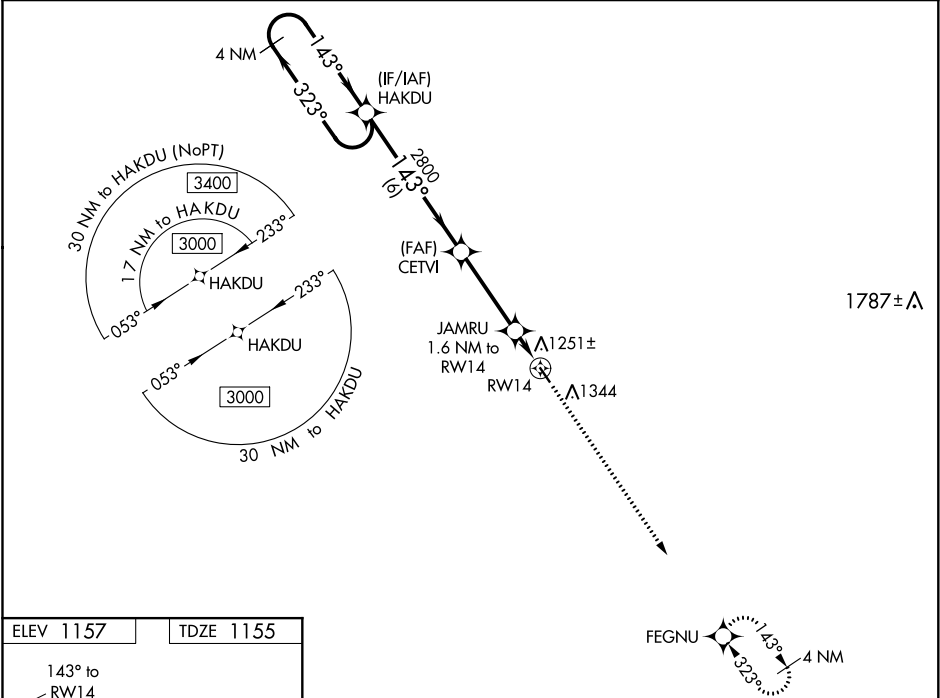
CLARION MUNI (CAV)

⚠

For uncompensated Baro-VNAV systems, LNAV/VNAV NA below -17°C (2°F) or above 54°C (130°F). DME/DME RNP-0.3 NA. When local altimeter setting not received, use Fort Dodge altimeter setting and increase all DA 52 feet, all MDA 60 feet; increase LPV and LNAV/VNAV all Cats visibility 1/8 mile. Baro-VNAV and VDP NA when using Fort Dodge altimeter setting. Helicopter visibility reduction below 3/4 SM NA.

MISSED APPROACH: Climb to 3000 direct FEGNU and hold.

| | | |
|--------------------------|--|---------------------------------|
| AWOS-3 126.575 | MINNEAPOLIS CENTER 134.0 288.3 | UNICOM 122.8 (CTAF) 0 |
|--------------------------|--|---------------------------------|



| | | | | | |
|---|--------|-------------|----|------|--------|
| VGSI and RNAV glidepath not coincident. | | | | 3000 | FEAGNU |
| 4 NM Holding Pattern | | | | 3000 | FEAGNU |
| GP 3.00° TCH 40 | | | | 3000 | FEAGNU |
| 3000 ← 323° → 143° → 2800 | | | | 3000 | FEAGNU |
| 2800 → 143° → 2800 | | | | 3000 | FEAGNU |
| 6 NM | | | | 3000 | FEAGNU |
| 3.5 NM | | | | 3000 | FEAGNU |
| 0.6 | | | | 3000 | FEAGNU |
| 1 NM | | | | 3000 | FEAGNU |
| CATEGORY | A | B | C | D | |
| LPV DA | 1405-1 | 250 (300-1) | NA | NA | |
| LNAV/VNAV DA | 1415-1 | 260 (300-1) | NA | NA | |
| LNAV MDA | 1520-1 | 365 (400-1) | NA | NA | |
| CIRCLING | 1680-1 | 523 (600-1) | NA | NA | |