

WAAS CH 69633 W15A	APP CRS 155°	Rwy Idg 3304 TDZE 769 Apt Elev 769
--	------------------------	---

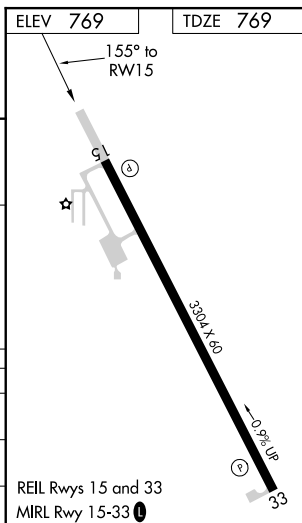
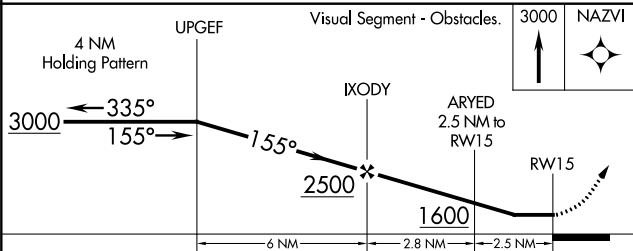
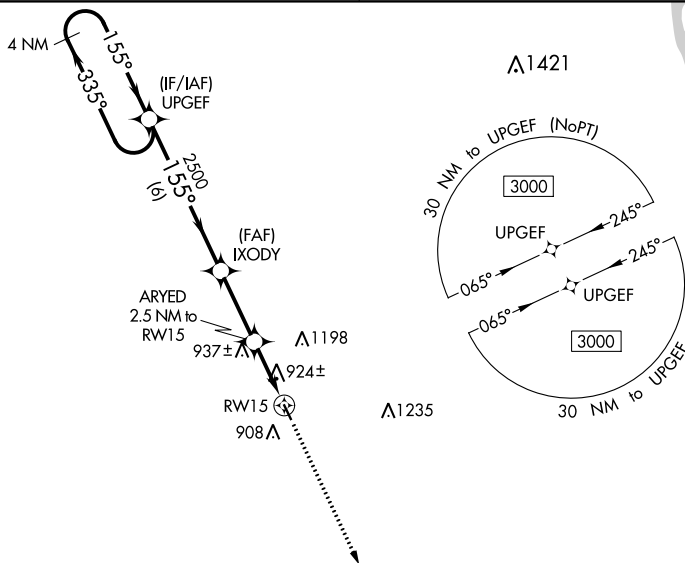
RNAV (GPS) RWY 15
MAQUOKETA MUNI (OQW)

T DME/DME RNP-0.3 NA. Helicopter visibility reduction below 1 SM NA.
A NA Night landing: Rwy 15 NA. Obtain local altimeter on CTAF; when not received, use Dubuque altimeter setting and increase all MDA 100 feet.

MISSED APPROACH: Climb to 3000
direct NAZVI and hold.

CHICAGO CENTER
133.95 281.4

UNICOM
122.725 (CTAF) **L**



CATEGORY	A	B	C	D
LP MDA	1180-1	411 (500-1)	NA	
LNAV MDA	1200-1	431 (500-1)	NA	
C CIRCLING	1240-1 471 (500-1)	1400-1 631 (700-1)	NA	