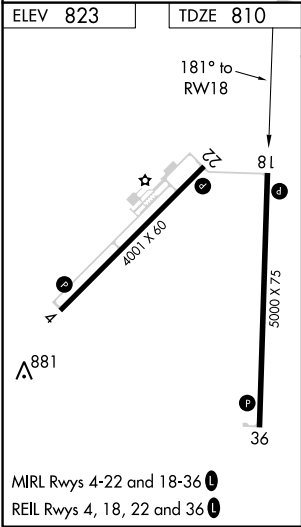
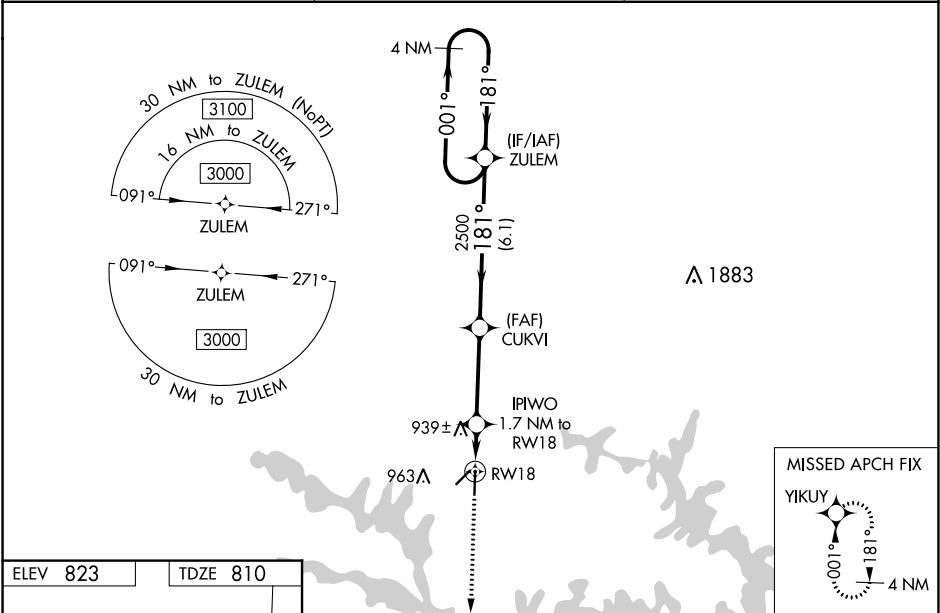


WAAS CH <b>65637</b> <b>W18A</b>	APP CRS <b>181°</b>	Rwy Idg TDZE Apt Elev	<b>5000</b> <b>810</b> <b>823</b>
--	------------------------	-----------------------------	---

RNAV (GPS) RWY 18

CLINTON RGNL (GLY)

RNP APCH. <div><div>▼</div><div>▲</div><div>Baro-VNAV NA when using Whiteman AFB altimeter setting. For uncompensated Baro-VNAV systems, LNAV/VNAV NA below -16°C or above 54°C. Circling Rwy 4 NA at night. When local altimeter setting not received, use Whiteman AFB altimeter setting and increase all DA 61 feet and all MDA 80 feet, visibility LNAV Cat C/D ¾ mile, Circling Cat D ¼ mile. Rwy 18 helicopter visibility reduction below ¾ SM NA. VDP NA when using Whiteman AFB altimeter setting.</div></div>		MISSED APPROACH: Climb to 3000 direct YIKUY and hold.
AWOS-3 <b>120.475</b>	WHITEMAN APP CON ★ <b>127.45</b>	UNICOM <b>122.8</b> (CTAF) <b>0</b>



3000 YIKUY		VGSI and RNAV glidepath not coincident (VGSI Angle 3.00/TCH 39).			
*LNAV only.		ZULEM 4 NM Holding Pattern			
1.1 NM to RW18		181° 2500 001° 3000			
1.1 NM 0.6 3.5 NM 6.1 NM		GP 3.00° TCH 45			
CATEGORY	A	B	C	D	
LPV DA	1060-1 250 (300-1)				
LNAV/VNAV DA	1060-1 250 (300-1)				
LNAV MDA	1200-1 390 (400-1)				
CIRCLING	1280-1 457 (500-1)	1300-1 477 (500-1)	1340-1½ 517 (600-1½)	1480-2 657 (700-2)	