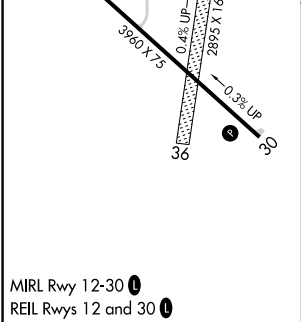
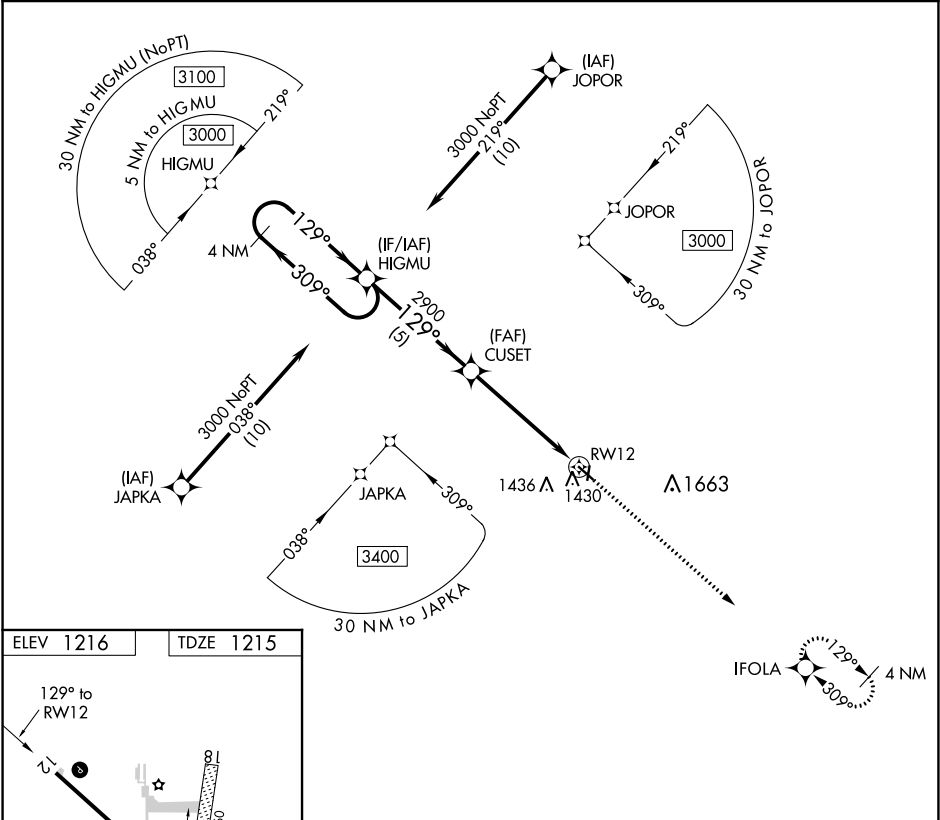


APP CRS	Rwy Idg	3960
129°	TDZE	1215
	Apt Elev	1216

RNAV (GPS) RWY 12
ALGONA MUNI (AXA)

RNP APCH.	MISSED APPROACH: Climb to 3000 direct IFOLA and hold.
When local altimeter setting not received, use Forest City altimeter setting and increase all MDA 80 feet. Procedure NA at night. Rwy 12 helicopter visibility reduction below 1 SM NA.	

AWOS-3 118.475	MINNEAPOLIS CENTER 134.0 288.3	UNICOM 122.8 (CTAF) 0
-------------------	-----------------------------------	--------------------------



4 NM Holding Pattern	HIGMU	CUSET	3000	IFOLA
3000	309°	129°	129°	
2900	309°	129°	129°	
5.2 NM	5.2 NM	5.2 NM	5.2 NM	
CATEGORY	A	B	C	D
LNAV MDA	1680-1	465 (500-1)	NA	NA