

VORTAC FOD 113.5 Chan 82	APP CRS 290°	Rwy Idg TDZE Apt Elev	4100 1222 1226
---------------------------------------	------------------------	-----------------------------	---

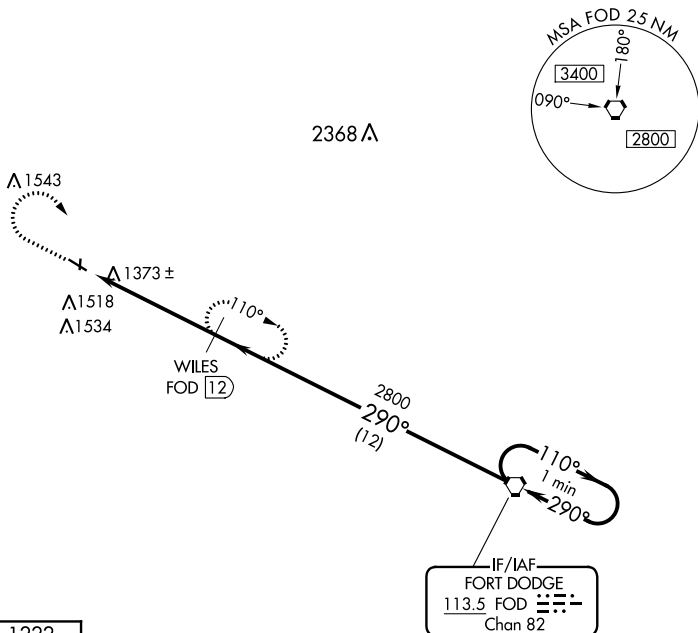
VOR/DME RWY 30
POCAHONTAS MUNI (POH)

T
A NA

Helicopter visibility reduction below $\frac{3}{4}$ SM NA. Use Algona altimeter setting; when not received, use Fort Dodge altimeter setting and increase all MDA 20 feet and S-30 Cat C visibility $\frac{1}{8}$ mile. Night Landing: Rwy 12 NA. Circling NA to Rwys 18 and 36.

MISSED APPROACH: Climb to 2800 then right turn on FOD VORTAC R-290 to WILES/FOD 12 DME and hold.

AXA AWOS-3 118.475	MINNEAPOLIS CENTER 134.0 288.3	UNICOM 122.8 (CTAF) 0
------------------------------	--	---------------------------------



NoPT for arrival on FOD VORTAC airway radials 003 CW 215.

