

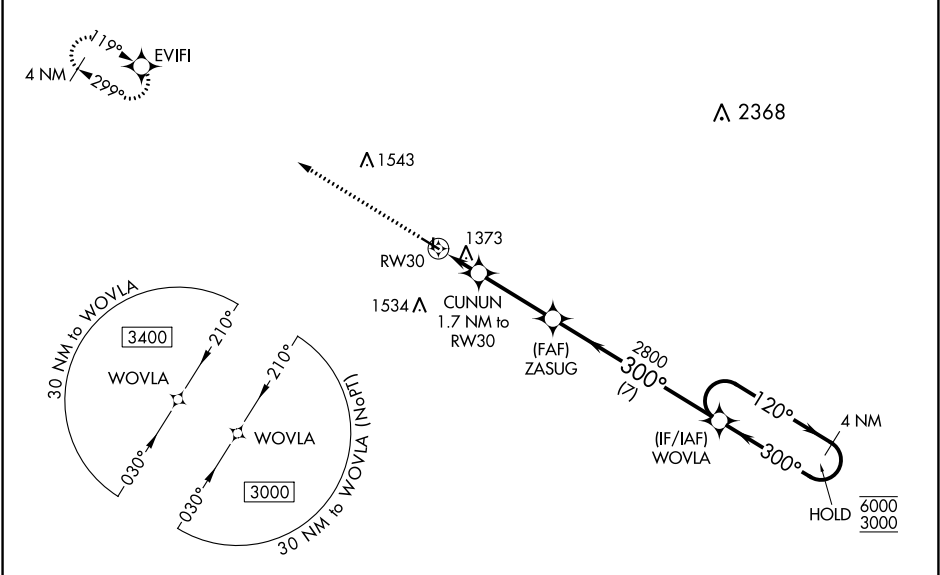
WAAS CH <b>70723</b> <b>W30A</b>	APP CRS <b>300°</b>	Rwy Idg <b>4100</b> TDZE <b>1222</b> Apt Elev <b>1226</b>
--	------------------------	---

RNAV (GPS) RWY 30

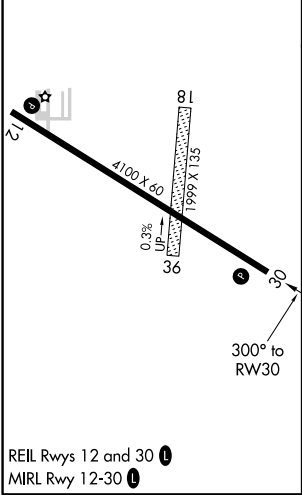
POCAHONTAS MUNI (POH)

RNP APCH.	<div><div><div>NA</div><div>NA</div></div><div>Circling NA to Rws 18 and 36. Circling Rwy 12 NA at night. Rwy 30 helicopter visibility reduction below ¾ SM NA. Use Algona altimeter setting; when not received, use Fort Dodge altimeter setting: increase LPV all Cats DA to 1536 feet, LNAV/VNAV all Cats DA to 1784 feet; increase all MDA 20 feet and LNAV Cat C visibility ½ SM. Baro-VNAV NA.</div></div>	MISSED APPROACH: Climb to 3000 direct EVIFI and hold.
-----------	--	---

AXA AWOS-3 <b>118.475</b>	MINNEAPOLIS CENTER <b>134.0 288.3</b>	UNICOM <b>122.8 (CTAF) 0</b>
------------------------------	--	---------------------------------



ELEV 1226	TDZE 1222
-----------	-----------



3000	EVIFI	VGSI and RNAV glidepath not coincident (VGSI Angle 3.00/TCH 40).			
*LNAV only	CUNUN 1.7 NM to RW30	ZASUG 2800	WOVLA 4 NM Holding Pattern	120° 6000	300° 3000
	RW30 1.7 NM	1800*	2800	GP 3.00°	TCH 45
	1.7 NM	3.1 NM	7 NM		
CATEGORY	A	B	C	D	
LPV DA	1534-1	312 (400-1)		NA	
LNAV/VNAV DA	1782-1½	560 (600-1½)		NA	
LNAV MDA	1740-1	518 (600-1)	1740-1¾ 518 (600-1¾)	NA	
CIRCLING	1800-1 574 (600-1)	1940-1 714 (800-1)	1940-2 714 (800-2)	NA	