

WAAS CH <b>99416</b> <b>W02A</b>	APP CRS <b>020°</b>	Rwy Idg TDZE Apt Elev	<b>5000</b> <b>991</b> <b>996</b>
--	------------------------	-----------------------------	---

RNAV (GPS) RWY 2  
SCHENCK FIELD (ICL)

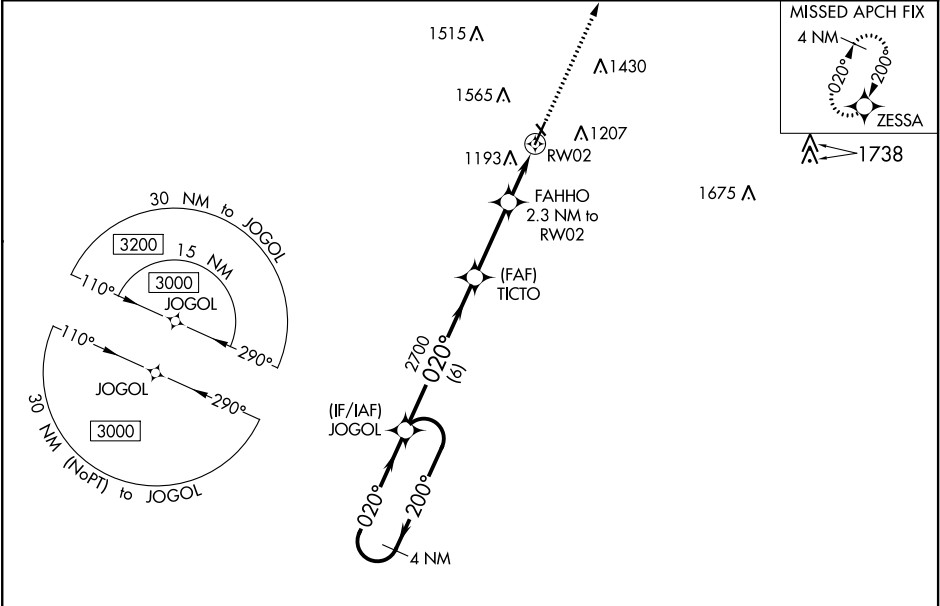
RNP APCH.

**V** For uncompensated Baro-VNAV systems, LNAV/VNAV NA below -16°C (4°F) or above 54°C (130°F).

**A** Circling NA west of Rwy 2-20. Circling NA to Rwys 13 and 31.  
Rwy 2 helicopter visibility reduction below 3/4 SM NA.

MISSED APPROACH:  
Climb to 3000 direct  
ZESSA and hold.

AWOS-3 <b>132.025</b>	MINNEAPOLIS CENTER <b>119.6 290.4</b>	UNICOM <b>122.8 (CTAF)</b>
--------------------------	--	-------------------------------



4 NM Holding Pattern

JOGOL

VGSI and descent angles not coincident (VGSI Angle 3.00/TCH 28).

TICTO

FAHHO 2.3 NM to RW02

\*1.4 NM to RW02

RW02

3000 ZESSA

\*LNAV only

GP 3.00° TCH 40

6 NM 2.9 NM 0.9 NM 1.4 NM

CATEGORY	A	B	C	D
LPV DA	1241-1 250 (300-1)			
LNAV/VNAV DA	1489-13/8 498 (500-13/8)			
LNAV MDA	1460-1	469 (500-1)	1460-13/8	469 (500-13/8)
CIRCLING	1500-1	504 (600-1)	1780-2 1/4 784 (800-2 1/4)	1780-2 1/2 784 (800-2 1/2)

ELEV 996

TDZE 991