

VOR/DME MCW  
**114.9**  
Chan **96**

APP CRS  
**297°**

Rwy Idg  
TDZE  
Apt Elev **1229**

N/A  
N/A  
**1229**

VOR-A  
FOREST CITY MUNI (FXY)

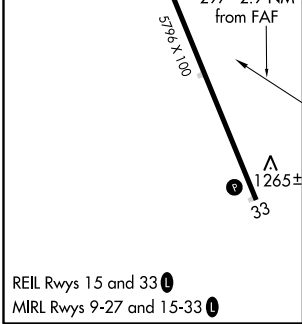
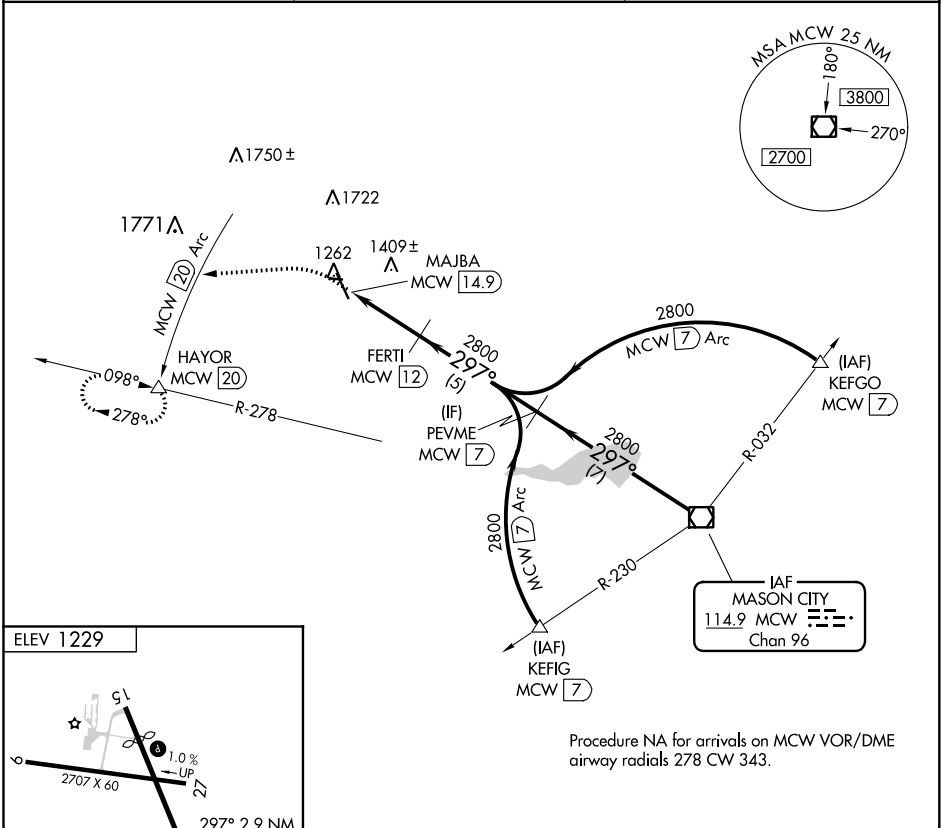
DME required.

▼

When local altimeter setting not received use Mason City altimeter setting and increase all MDA 40 feet.  
Circling to Rwy 9, 27 33 NA at night.

MISSED APPROACH: Climb to 3000 on heading 260° to MCW 20 DME Arc and on MCW 20 DME Arc counterclockwise to HAYOR/20 DME and hold.

AWOS-3 <b>123.925</b>	MINNEAPOLIS CENTER <b>127.3 257.675</b>	UNICOM <b>122.8 (CTAF) 0</b>
--------------------------	--	---------------------------------



3000	MCW 20 Arc counter-clockwise	HAYOR	FERTI MCW 12	PEVME MCW 7	MCW VOR/DME
	MAJBA MCW 14.9				
	2800	2800	297°	2800	
	2.9 NM	5 NM	7 NM		
CATEGORY	A	B	C	D	
CIRCLING	1680-1 451 (500-1)	1760-1 531 (600-1)		NA	