

WAAS CH 78016 W33A	APP CRS 332°	Rwy Idg 5796 TDZE 1203 Apt Elev 1229
--	------------------------	---

RNAV (GPS) RWY 33

RNP APCH.

▼ Rwy 33 helicopter visibility reduction below 1 SM NA. Baro-VNAV NA when using
▲ Mason City altimeter setting. For uncompensated Baro-VNAV systems, LNAV/VNAV
NA below -17°C or above 54°C. When local altimeter setting not received, use
Mason City altimeter setting and increase all DA 34 feet and all MDA 40 feet.
Straight-in Rwy 33 NA at night, Circling Rwy 9, 27 33 NA at night.

MISSED APPROACH: Climb to 3000
direct YEZCO and left turn on track
242° to JEGU and left turn on track
139° to OGITY and hold.

AWOS-3 123.925	MINNEAPOLIS CENTER 127.3 257.675	UNICOM 122.8 (CTAF) 0
--------------------------	--	---------------------------------

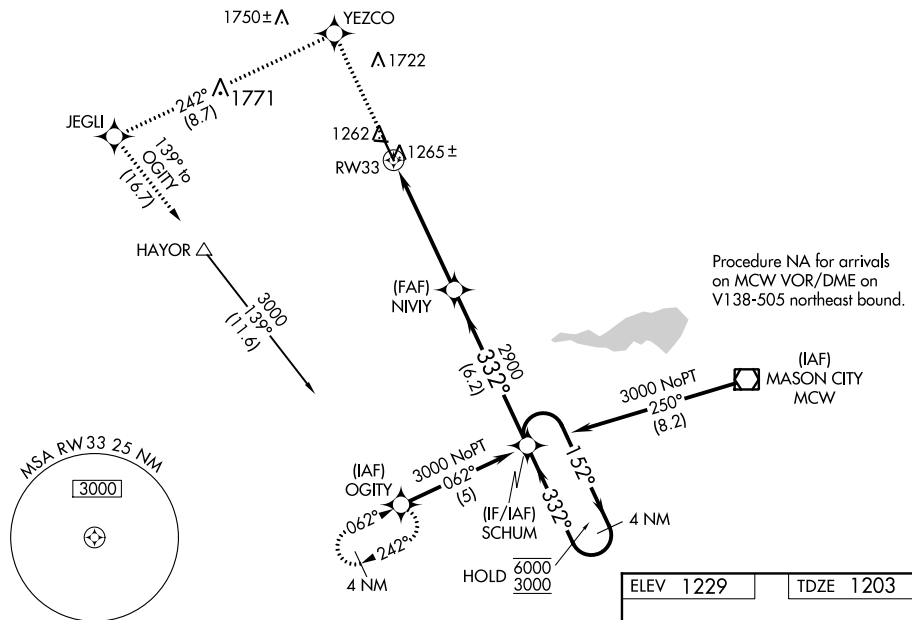


Diagram illustrating a 4 NM Holding Pattern. The pattern is defined by a series of turns around a fix (NIVY). The turns are 152° and 332°. The distance between the turns is 5.1 NM. The distance from the fix to the start of the pattern is 6.2 NM. The pattern is labeled with 'RW33' and 'SCHUM'. The pattern is also labeled with '4 NM Holding Pattern'. The pattern is shown with a 'tr 242°' and 'tr 139°' turn. The pattern is also labeled with '3000', 'YEZCO', 'JEGLI', 'OGITY', and 'SCHUM'. The pattern is also labeled with '6000', '3000', 'GP 3.00°', and 'TCH 40'.

