

WAAS CH <b>86732</b> <b>W31A</b>	APP CRS <b>314°</b>	Rwy Idg TDZE <b>1137</b> Apt Elev <b>1137</b>
--	------------------------	---

RNAV (GPS) RWY 31

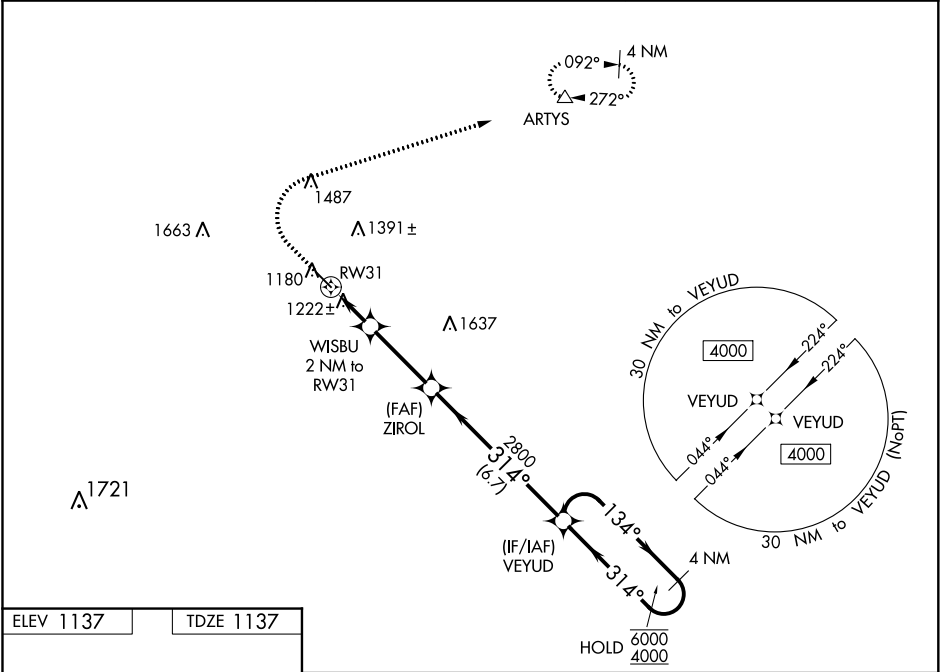
IOWA FALLS MUNI (IFA)

RNP APCH.

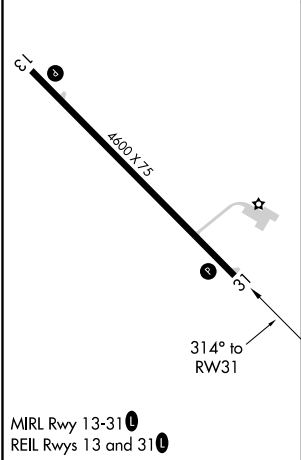
Rwy 31 helicopter visibility reduction below  $\frac{3}{4}$  SM NA.  
For uncompensated Baro-VNAV systems, LNAV/VNAV  
NA below -17°C or above 54°C.

MISSED APPROACH: Climb to 1600 then  
climbing right turn to 4000 direct ARTYS  
and hold, continue climb-in-hold to 4000.

AWOS-3 <b>120.425</b>	WATERLOO APP CON ★ <b>118.9</b>	UNICOM <b>122.8</b> (CTAF) <b>0</b>
--------------------------	------------------------------------	--



ELEV 1137	TDZE 1137
-----------	-----------



1600 4000 ARTYS

↑

↷

△

\*LNAV only

WISBU 2 NM to RW31

ZIROL 2800

RW31 1800\*

1 NM 1 NM 3.1 NM 6.7 NM

VEYUD 4 NM Holding Pattern

134° 314° 6000 4000

GP 3.00° TCH 40

CATEGORY	A	B	C	D
LPV DA	1387-1 250 (300-1)			
LNAV/VNAV DA	1387-1 250 (300-1)			
LNAV MDA	1480-1 343 (400-1)			
CIRCLING	1540-1 403 (500-1)	1620-1 483 (500-1)	1760-1 3/4 623 (700-1 3/4)	1800-2 663 (700-2)

NC-3, 31 DEC 2020 to 28 JAN 2021

NC-3, 31 DEC 2020 to 28 JAN 2021