

WAAS  
CH **53332**  
**W13A**

APP CRS  
**134°**

Rwy Idg **4600**  
TDZE **1129**  
Apt Elev **1137**

**RNAV (GPS) RWY 13**

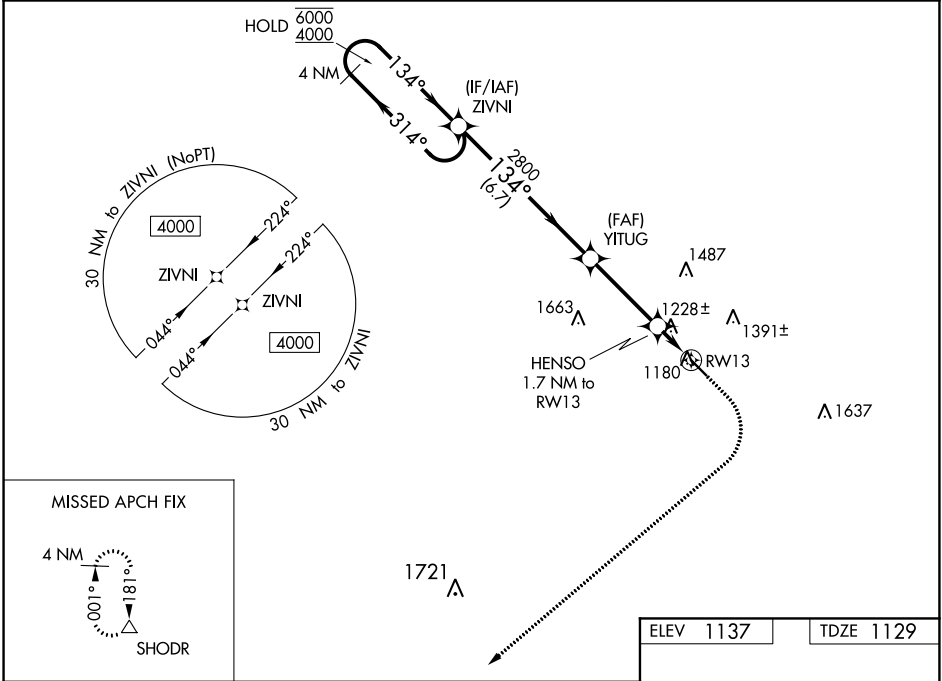
IOWA FALLS MUNI (IFA)

RNP APCH.

For uncompensated Baro-VNAV systems, LNAV/VNAV NA below -17°C or above 54°C.

MISSED APPROACH: Climb to 1600 then climbing right turn to 4000 direct SHODR and hold.

AWOS-3 <b>120.425</b>	WATERLOO APP CON ★ <b>118.9</b>	UNICOM <b>122.8</b> (CTAF) <b>0</b>
--------------------------	------------------------------------	--



4 NM Holding Pattern

6000  
4000

GP 3.00°  
TCH 40

ZIVNI

YITUG

HENSO

RWY 13

1600

4000

SHODR

134° to RWY 13

4600 X 75

CATEGORY	A	B	C	D
LPV DA		1379-1	250 (300-1)	
LNAV/VNAV DA		1389-1	260 (300-1)	
LNAV MDA		1480-1	351 (400-1)	
CIRCLING	1540-1 403 (500-1)	1620-1 483 (500-1)	1760-1¾ 623 (700-1¾)	1800-2 663 (700-2)

MIRL Rwy 13-31 **0**

REIL Rws 13 and 31 **0**