

RNAV (GPS) RWY 34
PELLA MUNI (PEA)

MISSED APPROACH: Climb to 4000 direct AYRAN and hold.

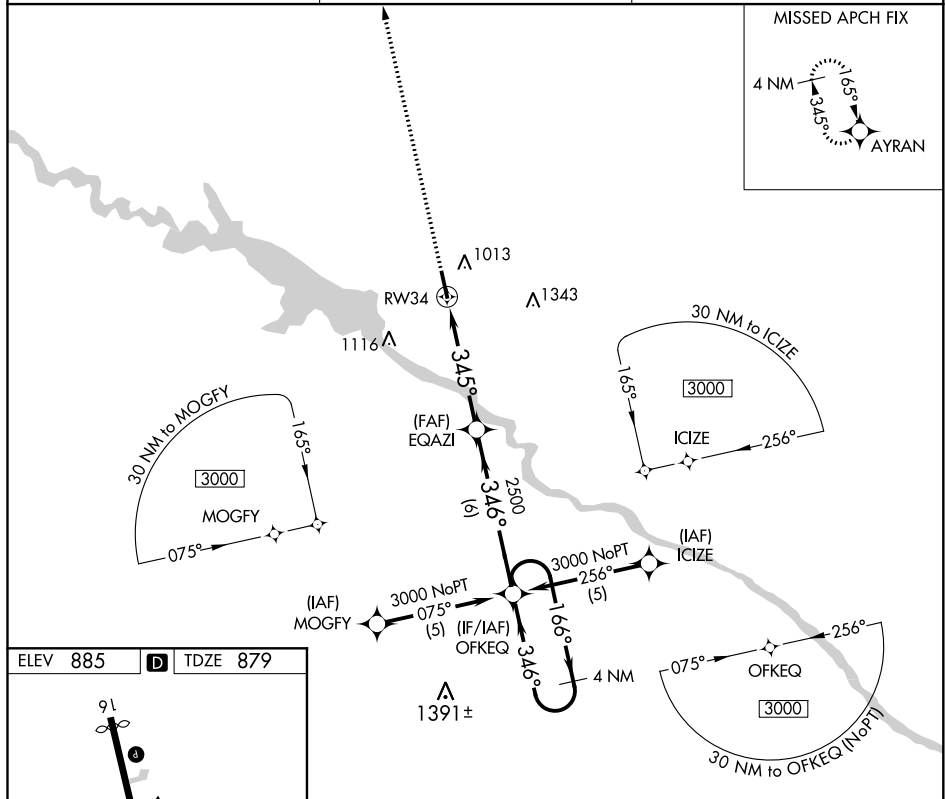
MISSED APCH FIX

Diagram illustrating a non-precision approach with a step climb. The approach path starts at 3400 feet, descends to 3450 feet (345° to RW34), then ascends to 2500 feet (345°), and finally descends to 3000 feet (346°). The final approach segment is 4.9 NM long. The holding pattern is a 4 NM holding pattern at 3000 feet. The approach is for RW34, with a 345° heading to the runway.

CATEGORY	A	B	C	D
LNAB MDA	1320-1	441 (500-1)	1320-1½ 441 (500-1½)	NA
CIRCLING	1380-1	495 (500-1)	1440-1½ 555 (600-1½)	NA

NC-3, 31 DEC 2020 to 28 JAN 2021