

APP CRS
323°

Rwy Idg
TDZE
Apt Elev

3641
1286
1288

RNAV (GPS) RWY 32

AUDUBON COUNTY (ADU)

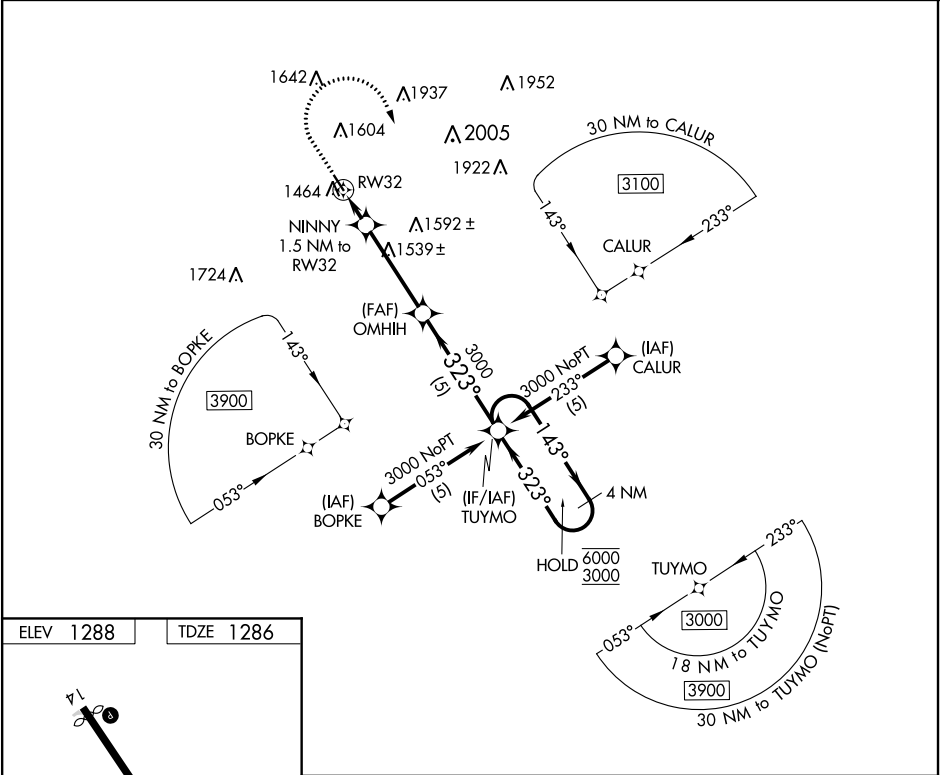
RNP APCH.

▼ Circling Rwy 14 NA at night.

▲ Rwy 32 helicopter visibility reduction below ¾ SM NA. When local altimeter setting not received, procedure NA.

MISSED APPROACH: Climb to 2500 then climbing right turn to 3000 direct TUYMO and hold.

AWOS-3 118.075	MINNEAPOLIS CENTER 119.6 290.4	UNICOM 122.8 (CTAF) 1
-------------------	-----------------------------------	--------------------------



ELEV 1288

TDZE 1286

The inset chart shows a detailed view of the approach path. It includes a 30 NM segment from BOPKE, a 143° turn, and a 323° turn to RWY 32. The chart also shows a 30 NM segment from TUYMO to a 3000 ft hold, and a 30 NM segment from TUYMO to a 3000 ft hold. The chart includes various altitudes (1642, 1937, 1952, 1604, 2005, 1922, 1592±, 1539±, 1724, 1464, 143°, 053°, 3000, 323°, 1800, 6000, 3000, 3900) and distances (30 NM, 1.5 NM, 4 NM, 1.8 NM, 30 NM).

2500

3000

TUYMO

VGSI and descent angles not coincident (VGSI Angle 3.25/TCH 40).

OMHIIH

TUYMO

4 NM Holding Pattern

NINNY 1.5 NM to RW32

≤ 3.00° TCH 40

1800

1.5 NM

3.8 NM

5 NM

CATEGORY	A	B	C	D
LNAV MDA	1760-1	474 (500-1)	NA	NA
CIRCLING	1900-1 612 (700-1)	1920-1 632 (700-1)	NA	NA