



VORTAC MAW	APP CRS	Rwy Idg	5000
111.2	351°	TDZE	298
Chan 49		Apt Elev	304

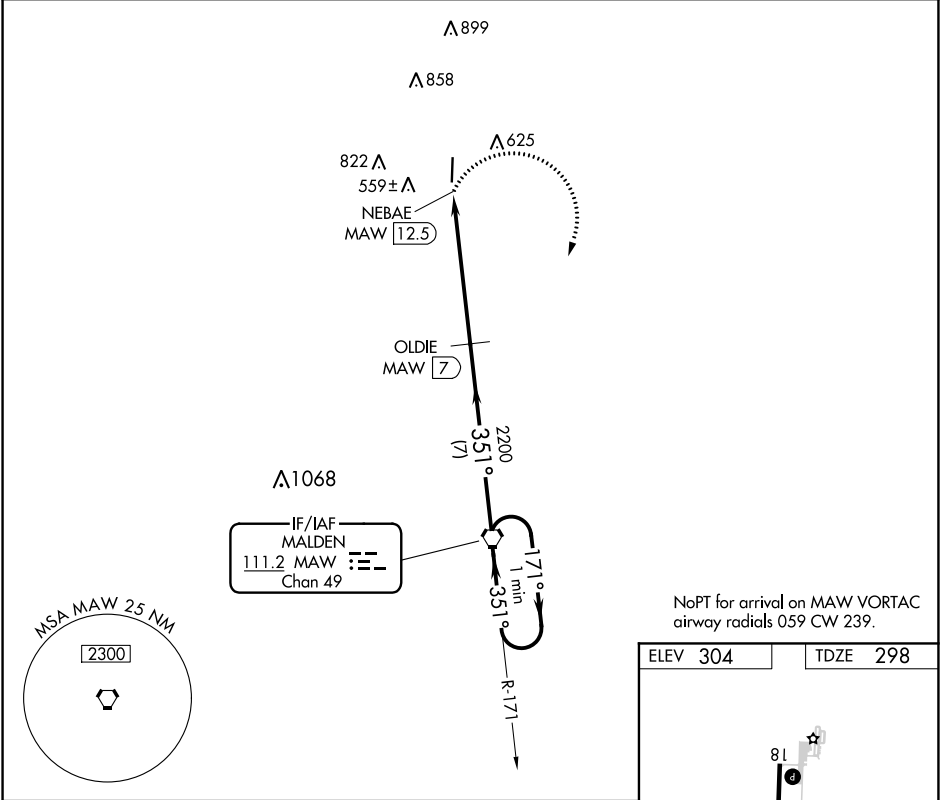
VOR/DME RWY 36
DEXTER MUNI (DXE)

**NA**

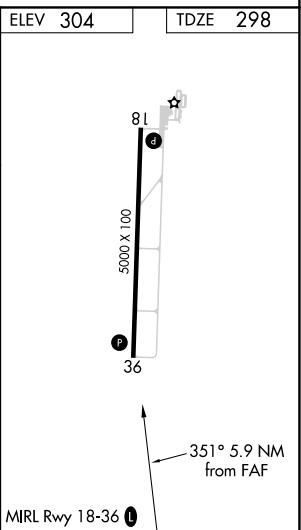
Use Poplar Bluff altimeter setting, when not received, use Cape Girardeau Rgnl altimeter setting and increase all MDA 40 feet and Circling Cat C/D visibility ¼ mile.



MISSED APPROACH: Climbing right turn to 2200 direct MAW VORTAC and hold.

POF ASOS 124.225	MEMPHIS CENTER 133.65 292.15	UNICOM 122.8 (CTAF) 
---------------------	---------------------------------	--



NoPT for arrival on MAW VORTAC
airway radials 059 CW 239.



2200	MAW
	
NEBAE MAW 12.5	OLDIE MAW 7
MAW VORTAC	One Minute Holding Pattern
351°	171°
2200	2200
2.99°	TCH 40
0.4	5.5 NM
7 NM	
CATEGORY	A
	B
	C
	D
S-36	920-1 622 (700-1)
	920-1 622 (700-1 3/4)
	920-2 622 (700-2)
CIRCLING	960-1 656 (700-1)
	1040-2 736 (800-2)
	1180-2 876 (900-2 3/4)

NC-3, 31 DEC 2020 to 28 JAN 2021

NC-3, 31 DEC 2020 to 28 JAN 2021