

WAAS CH 86819 W15A	APP CRS 152°	Rwy Idg 3997 TDZE 730 Apt Elev 730
--	------------------------	---

RNAV (GPS) RWY 15

MOUNT PLEASANT MUNI (MPZ)

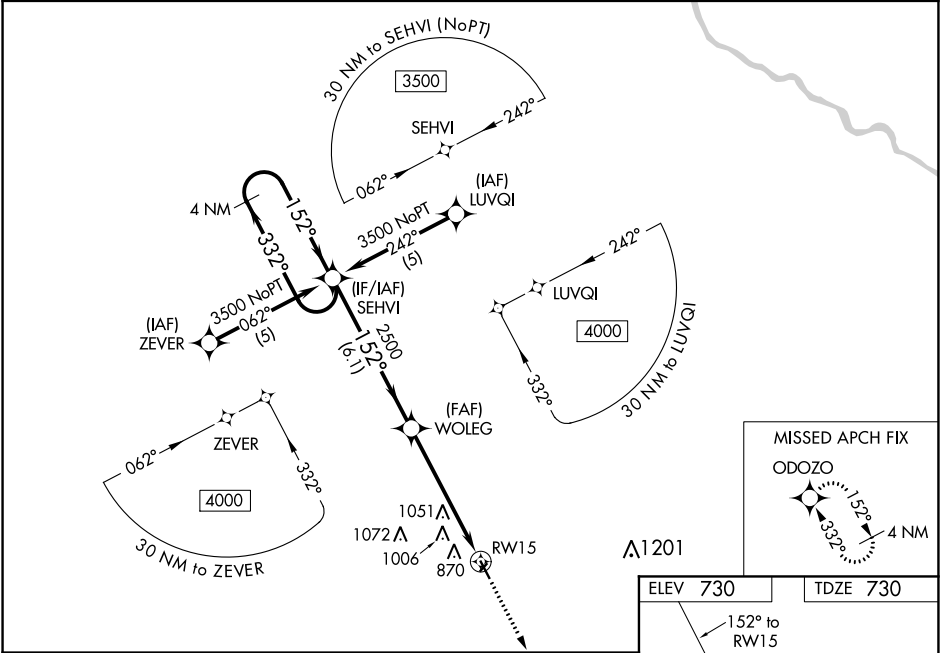
▼

▲

Baro-VNAV NA when using Burlington altimeter setting. For uncompensated Baro-VNAV systems, LNAV/VNAV NA below -16°C (4°F) or above 54°C (130°F). DME/DME RNP-0.3 NA. Visibility reduction by helicopters NA. When VGSI inoperative, straight-in minimums NA at night. When local altimeter setting not received, use Burlington altimeter setting: increase LPV DA to 1031 feet, LNAV/VNAV DA to 1394 feet and all LNAV/VNAV visibilities ¼ mile; increase all MDA 60 feet, increase LNAV and Circling Cat C visibility ¼ mile. Circling NA to Rwy 3/21.

MISSED APPROACH:
Climb to 3500 direct
ODOZO and hold.

AWOS-3 119.325	CHICAGO CENTER 135.6 316.1	UNICOM 123.05 (CTAF) 0
--------------------------	--------------------------------------	----------------------------------



4 NM Holding Pattern		SEHVI	WOLEG	3500	ODOZO
3500		332°	152°	2500	RW15
GP 3.00° TCH 35		6.1 NM			
		5.4 NM			
CATEGORY	A	B	C	D	
LPV DA	980-1 250 (300-1)			NA	
LNAV/VNAV DA	1343-2¼ 613 (700-2¼)			NA	
LNAV MDA	1360-1	630 (700-1)	1360-1¾ 630 (700-1¾)	NA	
CIRCLING	1360-1	630 (700-1)	1360-1¾ 630 (700-1¾)	NA	

