

WAAS CH <b>65901</b> <b>W04A</b>	APP CRS <b>037°</b>	Rwy Idg TDZE <b>863</b> Apt Elev <b>869</b>
--	------------------------	---

RNAV (GPS) RWY 4

LEE C FINE MEMORIAL (AIZ)

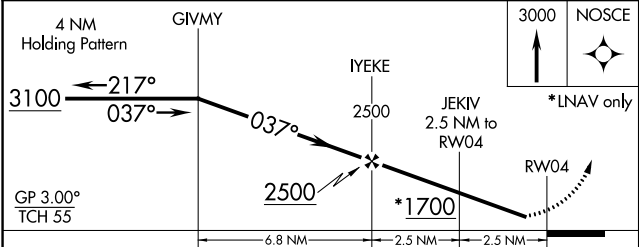
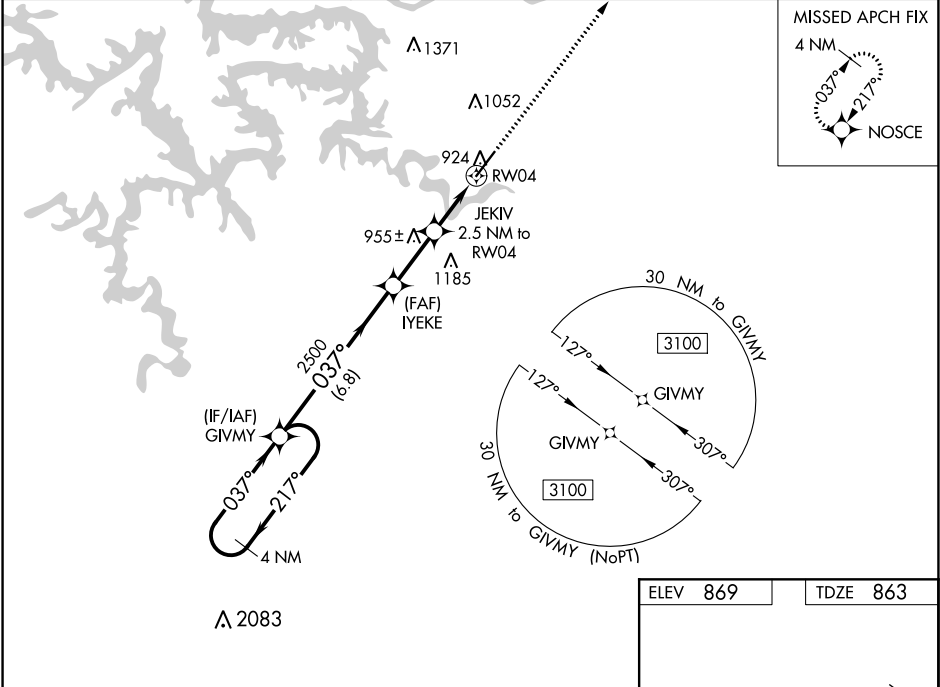
RNP APCH.

⚠

For uncompensated Baro-VNAV systems, LNAV/VNAV NA below -16°C or above 54°C. Procedure NA at night. Rwy 4 helicopter visibility reduction below 1 SM NA. When local altimeter setting not received, use Camdenton altimeter setting and increase all DA 50 feet, all MDA 60 feet, and LNAV Cat C visibility ½ mile. Baro-VNAV NA when using Camdenton altimeter setting.

MISSED APPROACH: Climb to 3000 direct NOSCE and hold.

AWOS-3PT <b>135.325</b>	MIZZU APP CON <b>124.1 353.7</b>	UNICOM <b>122.8 (CTAF) 0</b>
----------------------------	-------------------------------------	---------------------------------



CATEGORY	A	B	C	D
LPV DA	1127-1	264 (300-1)		NA
LNAV/VNAV DA	1113-1	250 (300-1)		NA
LNAV MDA	1220-1	357 (400-1)		NA

