

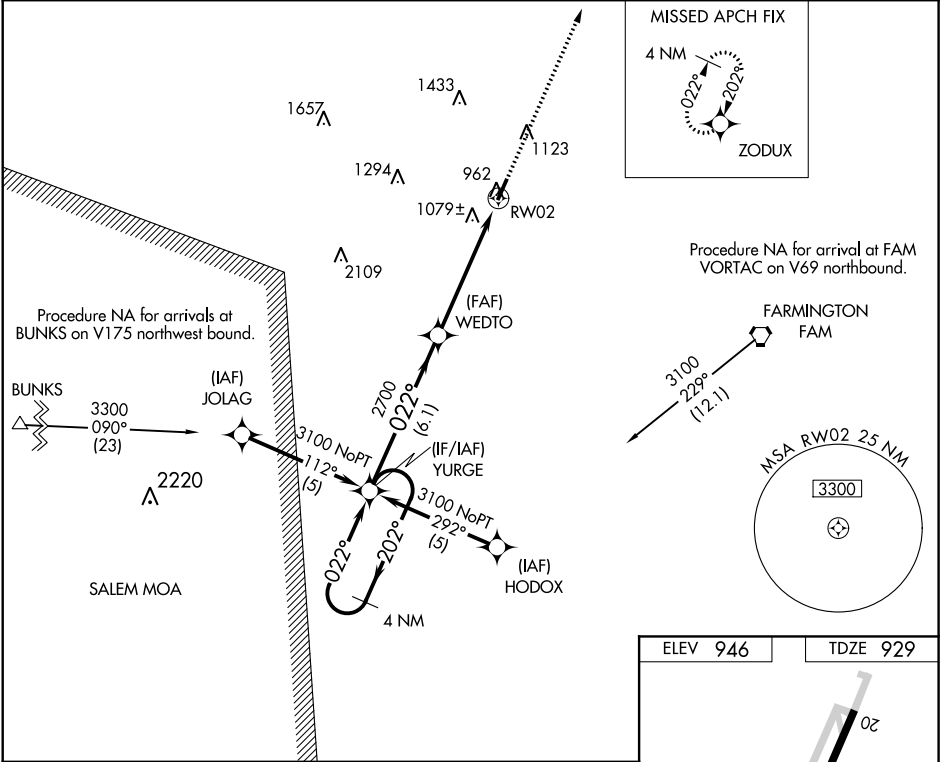
WAAS CH <b>61019</b> <b>W02A</b>	APP CRS <b>022°</b>	Rwy Idg TDZE <b>929</b> Apt Elev <b>946</b>
--	------------------------	---

**RNAV (GPS) RWY 2**  
FARMINGTON RGNL (FAM)

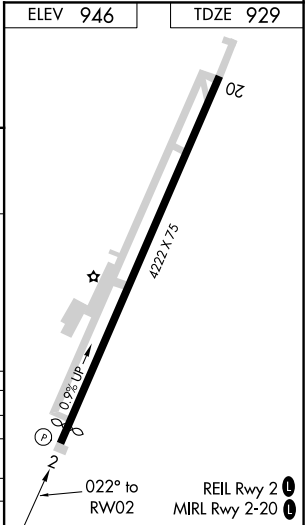
**⚠** For uncompensated Baro-VNAV systems, LNAV/VNAV NA below -16°C (4°F) or above 54°C (130°F). DME/DME RNP-0.3 NA. VDP and Baro-VNAV NA when using Sparta altimeter setting. When local altimeter setting not received, use Sparta altimeter setting and increase all DA 154 feet and all MDA 160 feet; increase LPV and LNAV/VNAV all Cats visibility ½ mile. Circling to Rwy 20 NA at night.

**MISSED APPROACH:**  
Climb to 3100 direct ZODUX and hold.

AWOS-3PT <b>119.275</b>	KANSAS CITY CENTER <b>127.475 346.275</b>	UNICOM <b>122.8 (CTAF) 0</b>
----------------------------	--	---------------------------------



4 NM Holding Pattern		3100	ZODUX
YURGE		2700	
WEDTO			
RWY02			
* 1.7 NM to RWY02			
* LNAV only			
GP 3.00° TCH 40			
6.1 NM		3.7 NM	1.7 NM
CATEGORY	A	B	C
LPV DA	1179-1	250 (300-1)	NA
LNAV/VNAV DA	1479-2	550 (600-2)	NA
LNAV MDA	1500-1	571 (600-1)	NA
CIRCLING	1500-1	554 (600-1)	NA



NC-3, 31 DEC 2020 to 28 JAN 2021

NC-3, 31 DEC 2020 to 28 JAN 2021