

WAAS CH 78415 W18A	APP CRS 185°	Rwy Idg TDZE 1197 Apt Elev 1197
--	------------------------	---

RNAV (GPS) RWY 18

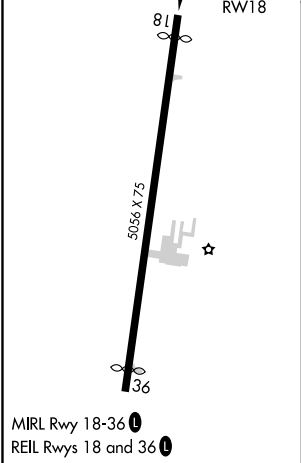
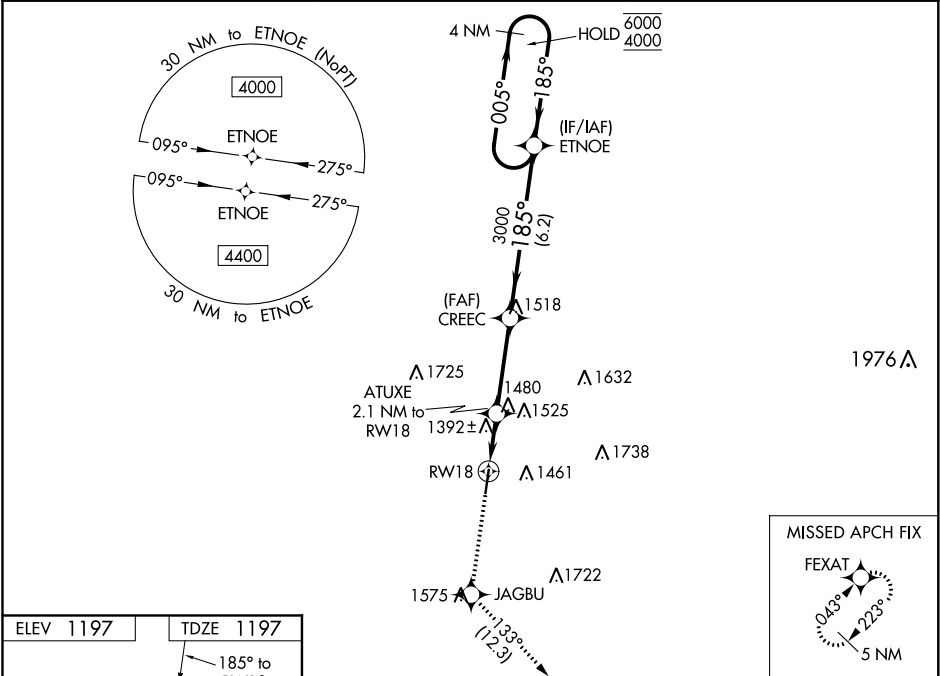
LE MARS MUNI (LRJ)

RNP APCH.

Rwy 18 helicopter visibility reduction below $\frac{3}{4}$ SM NA.
For uncompensated Baro-VNAV systems, LNAV/VNAV NA
below -17°C or above 54°C.

MISSED APPROACH: Climb to 4500 direct JAGBU
and on track 133° to FEXAT and hold.

AWOS-3P 120.975	SIOUX CITY APP CON * 124.6 307.0	UNICOM 122.8 (CTAF) 0
---------------------------	--	---------------------------------



4500	JAGBU	tr 133°	FEXAT	CREEC	ETNOE	4 NM Holding Pattern
* LNAV only	ATUXE 2.1 NM to RW18	* 1.3 NM to RW18	1900*	3000	185°	005°
1.3 NM	0.8 NM	3.5 NM	6.2 NM			
GP 3.00°						TCH 40
CATEGORY	A	B	C	D		
LPV DA	1479-1	282 (300-1)		NA		
LNAV/VNAV DA	1691-1 $\frac{3}{8}$	494 (500-1 $\frac{3}{8}$)		NA		
LNAV MDA	1660-1	463 (500-1)	1660-1 $\frac{3}{8}$ 463 (500-1 $\frac{3}{8}$)	NA		
CIRCLING	1760-1 563 (600-1)	1780-1 583 (600-1)	1840-1 $\frac{3}{4}$ 643 (700-1 $\frac{3}{4}$)	NA		