

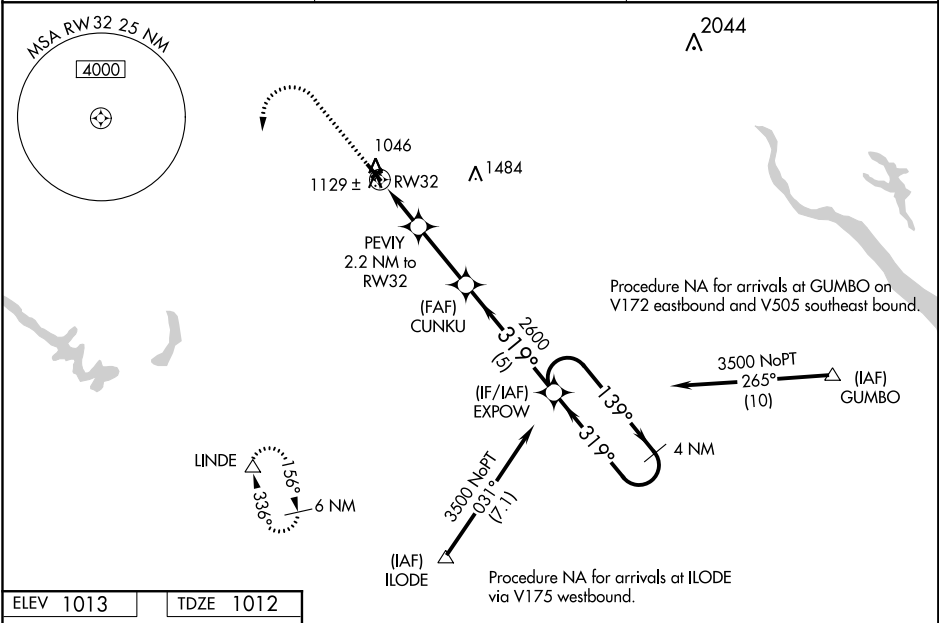
WAAS CH <b>90508</b> <b>W32A</b>	APP CRS <b>319°</b>	Rwy Idg TDZE Apt Elev	<b>4001</b> <b>1012</b> <b>1013</b>
--	------------------------	-----------------------------	---

RNAV (GPS) RWY 32  
PERRY MUNI (PRO)

**⚠** For uncompensated Baro-VNAV systems, LNAV/VNAV NA below -17°C (2°F) or above 54°C (130°F). DME/DME RNP-0.3 NA. When local altimeter setting not received, use Boone altimeter setting and increase all DA 66 feet and all MDA 80 feet. Increase LPV visibility all Cats to ¾ mile, and increase LNAV/VNAV visibility all Cats to 1 ½ mile. Baro-VNAV and VDP NA when using Boone altimeter setting.

MISSED APPROACH: Climb to 1500 then climbing left turn to 3500 direct LINDE and hold.

AWOS-3 <b>118.0</b>	DES MOINES APP CON <b>135.2 360.7</b>	UNICOM <b>122.8 (CTAF) 0</b>
------------------------	--	---------------------------------



ELEV 1013	TDZE 1012
-----------	-----------

1500 3500 LINDE

VGSI and RNAV glidepath not coincident (VGSI Angle 3.00/TCH 28).

EXPOW 4 NM Holding Pattern

\* LNAV only.

PEVIY 2.2 NM to RW32

\* 1.1 NM to RW32

1740\*

2600

319°

139°

3500

GP 3.00° TCH 40

1.1 1.1 2.7 NM 5 NM

CATEGORY	A	B	C	D
LPV DA	1212-¾	200 (200-¾)	NA	
LNAV/VNAV DA	1299-⅞	287 (300-⅞)	NA	
LNAV MDA	1380-1	368 (400-1)	NA	
CIRCLING	1460-1 447 (500-1)	1480-1 467 (500-1)	NA	

MIRL Rwy 14-32

REIL Rws 14 and 32

319° to RW32

NC-3, 31 DEC 2020 to 28 JAN 2021

NC-3, 31 DEC 2020 to 28 JAN 2021