

VOR/DME COU	APP CRS	Rwy Idg	6501
110.2	199°	TDZE	889
Chan 39		Apt Elev	889

VOR Z RWY 20
COLUMBIA RGNL (COU)



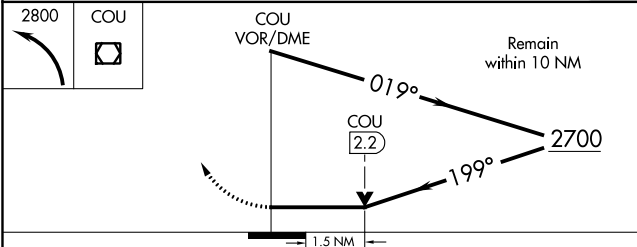
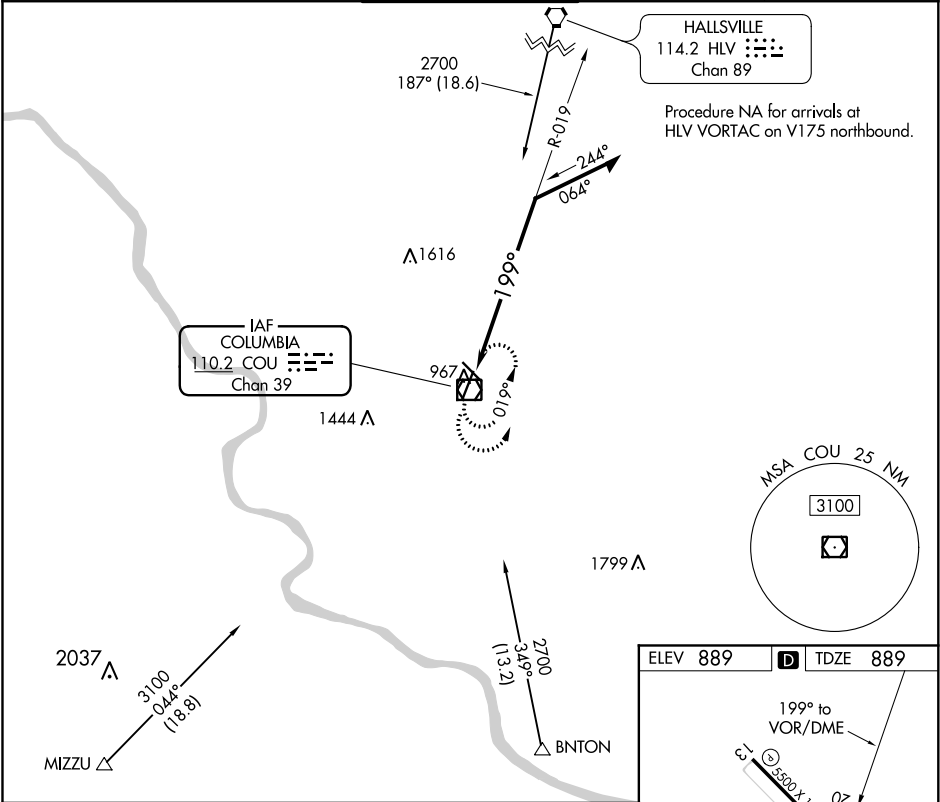
Inop table does not apply to S-20 Cats C/D.
Circling NA for Cat D west of Rwy 2 and 13.



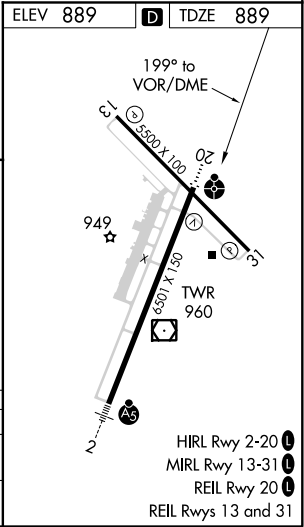
ODALS

MISSED APPROACH: Climbing left turn to 2800 in COU
VOR/DME holding pattern.

ATIS 128.45	MIZZU APP CON 124.375 353.7	COLUMBIA TOWER ★ 119.3 (CTAF) 0 363.25	GND CON 121.6	UNICOM 122.95
----------------	--------------------------------	---	------------------	------------------



CATEGORY	A	B	C	D
S-20	1400-3/4 511 (600-3/4)		1400-1 511 (600-1)	
CIRCLING	1400-1 511 (600-1)		1400-1 511 (600-1)	1440-2 551 (600-2)



NC-3, 31 DEC 2020 to 28 JAN 2021

NC-3, 31 DEC 2020 to 28 JAN 2021