

WAAS CH 61133 W18A	APP CRS 179°	Rwy Idg 5500 TDZE 883 Apt Elev 910
--	------------------------	---

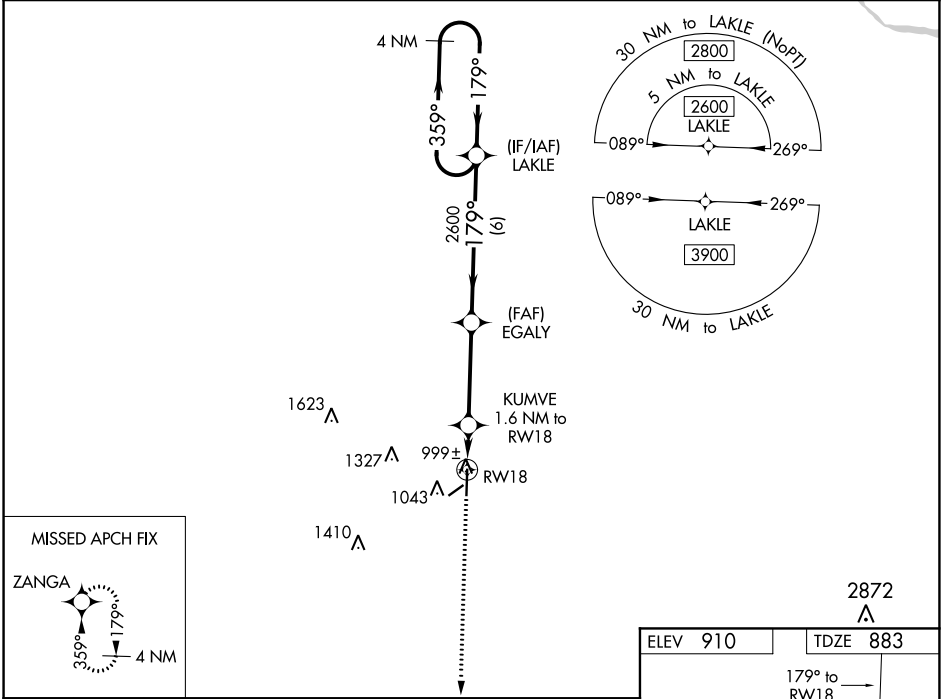
RNAV (GPS) RWY 18

SEDALIA RGNL (DMO)

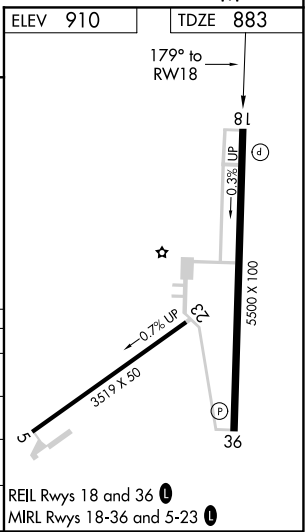
⚠ DME/DME RNP-0.3 NA. When local altimeter setting not received, use Whiteman AFB altimeter setting: increase all DA 46 feet and LNAV/VNAV visibility 1/8 mile; increase all MDA 60 feet and Cats C and D visibilities 1/4 mile. For uncompensated Baro-VNAV systems, LNAV/VNAV NA below -16°C (3°F) or above 54°C (130°F). Baro-VNAV and VDP NA when using Whiteman AFB altimeter setting. Night Landing Rwy 5, 23 NA.

MISSED APPROACH:
Climb to 2600 direct ZANGA and hold.

ASOS 120.525	WHITEMAN APP CON* 127.45 284.0	UNICOM 122.8 (CTAF) 0
------------------------	--	---------------------------------



<div><div>2600</div><div>ZANGA</div></div> <div>*LNAV only</div>	<div><div>KUMVE 1.6 NM to RW18</div><div>EGALY 2600</div><div>LAKLE</div><div>4 NM Holding Pattern</div></div> <div><div>179°</div><div>359°</div><div>2600</div><div>GP 3.00° TCH 37</div></div> <div><div>1 NM</div><div>0.6</div><div>3.7 NM</div><div>6 NM</div></div>			
CATEGORY	A	B	C	D
LPV DA	1133-1 250 (300-1)			
LNAV/VNAV DA	1155-1 272 (300-1)			
LNAV MDA	1260-1 377 (400-1)			
CIRCLING	1360-1 450 (500-1)	1460-1 550 (600-1)	1640-2 730 (800-2)	1640-2 1/4 730 (800-2 1/4)



NC-3, 31 DEC 2020 to 28 JAN 2021

NC-3, 31 DEC 2020 to 28 JAN 2021