

LOC/DME I-LUC <b>109.15</b> Chan <b>28</b> (Y)	APP CRS <b>240°</b>	Rwy Idg TDZE Apt Elev	<b>5500</b> <b>545</b> <b>547</b>
--	------------------------	-----------------------------	---

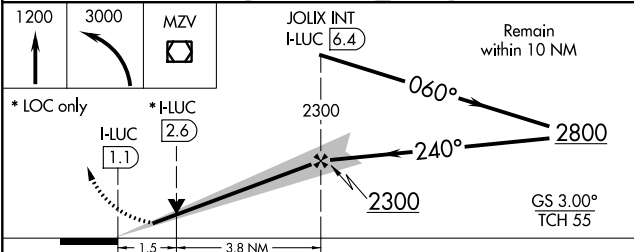
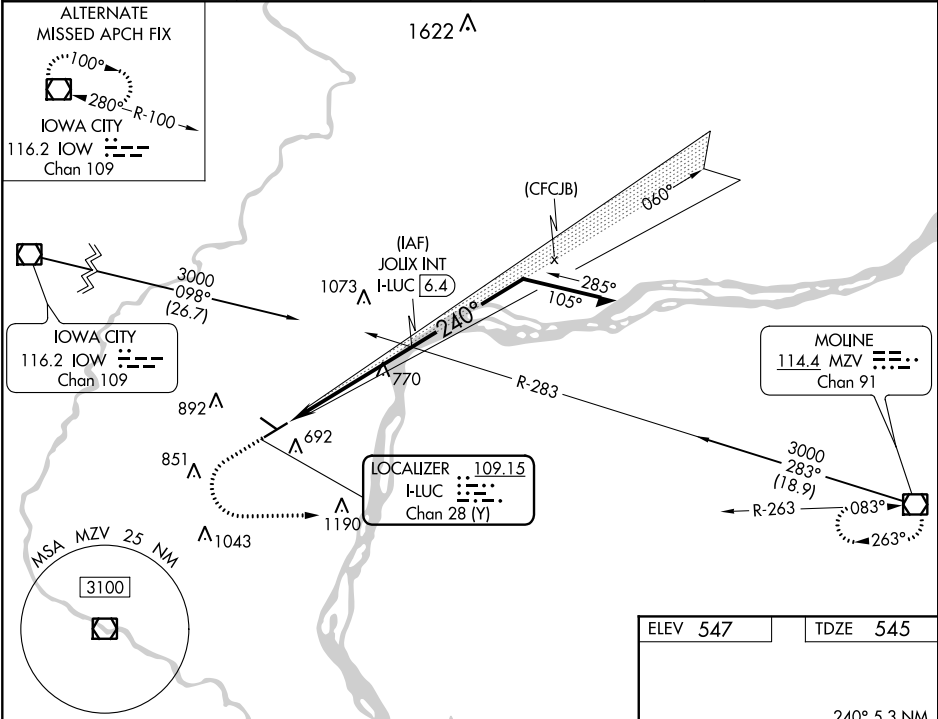
ILS or LOC RWY 24  
MUSCATINE MUNI (MUT)

**V** VDP NA with Iowa City altimeter setting. When local altimeter setting not received, use Iowa City altimeter setting; increase DA to 825 feet; increase all MDA 80 feet and S-LOC 24 Cat C/D visibility  $\frac{3}{4}$  SM and Circling Cat C visibility  $\frac{1}{4}$  SM. For inop ALS when using Iowa City altimeter setting, increase S-ILS 24 visibility to 1 SM all Cats, and S-LOC 24 Cat C/D visibility to  $\frac{1}{4}$  SM.

**MAISR**  
**A5**

**MISSED APPROACH:** Climb to 1200 then climbing left turn to 3000 direct MZV VOR/DME and hold.

AWOS-3 <b>119.775</b>	QUAD CITY APP CON* <b>133.275 257.8</b>	CLNC DEL <b>119.125</b>	UNICOM <b>122.7</b> (CTAF) <b>0</b>
--------------------------	--	----------------------------	--



ELEV 547	TDZE 545
REIL Rwy 6, 12, and 30 <b>0</b>	
MIRL Rwy 6-24 and 12-30 <b>0</b>	
FAF to MAP 5.3 NM	
Knots	60 90 120 150 180
Min:Sec	5:18 3:32 2:39 2:07 1:46

NC-3, 31 DEC 2020 to 28 JAN 2021

NC-3, 31 DEC 2020 to 28 JAN 2021