

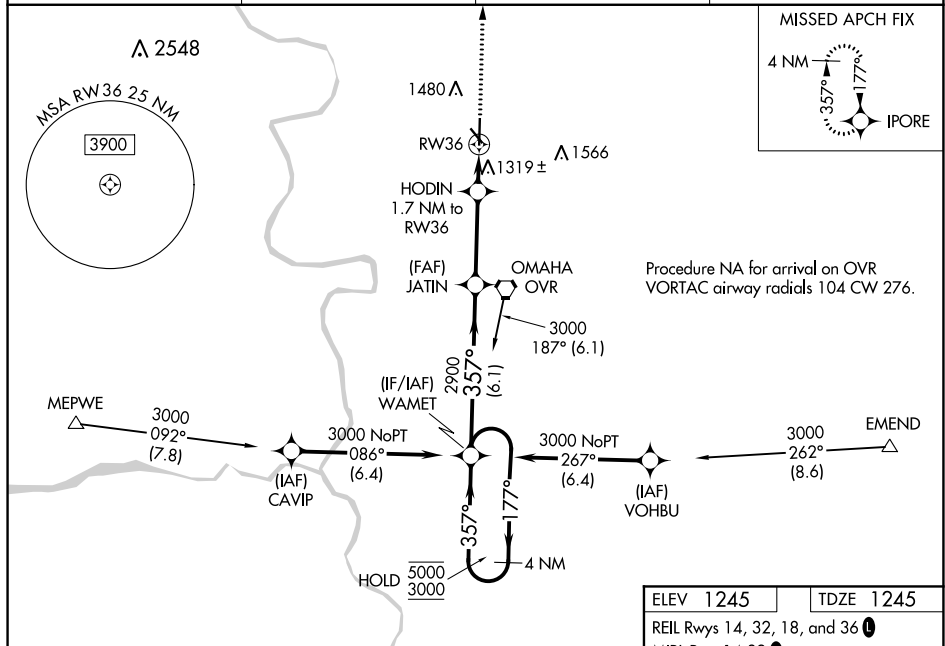
RNAV (GPS) RWY 36

COUNCIL BLUFFS MUNI (CBF)

▼ Baro-VNAV and VDP NA when using Eppley Airfield altimeter setting. For uncompensated
▲ Baro-VNAV systems, LNAV/VNAV NA below -17°C or above 54°C. When local altimeter
setting not received, use Eppley Airfield altimeter setting and increase LPV DA to 1498 feet,
LNAV/VNAV DA to 1548 feet, and all MDA 60 feet and increase LNAV/VNAV all Cats
visibility ½ SM, LNAV Cat C and D visibility ½ SM, and Circling Cat C and D visibility ¼ SM.

MISSED APPROACH: Climb to 3000 direct IPORE and hold.

AWOS-3 126.575	OMAHA APP CON 124.5 263.0	CLNC DEL 127.675	UNICOM 122.8 (CTAF) 0
--------------------------	-------------------------------------	----------------------------	---------------------------------



4 NM
Holding Pattern

WAMET

JATIN

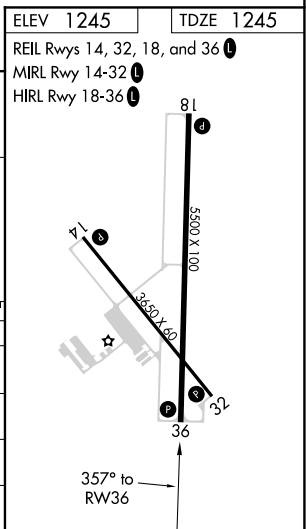
HODIN

RW36

GP 3.00°
TCH 50

***RNAV only**

CATEGORY	A	B	C	D
LPV DA	1445- ³ / ₄ 200 (200- ³ / ₄)			
LNAV/VNAV DA	1495- ³ / ₄ 250 (300- ³ / ₄)			
LNAV MDA	1580-1 335 (400-1)			
CIRCLING	1780-1 535 (600-1)	1840-1 595 (600-1)	1840-1½ 595 (600-1½)	1880-2 635 (700-2)



NC-3, 31 DEC 2020 to 28 JAN 2021