

RNAV (GPS) RWY 2
PERRYVILLE RGNL (PCD)

T For uncompensated Baro-VNAV systems, procedure NA below
A 15°C or above 54°C. Rwy 2 helicopter visibility reduction below $\frac{3}{4}$ SM NA.

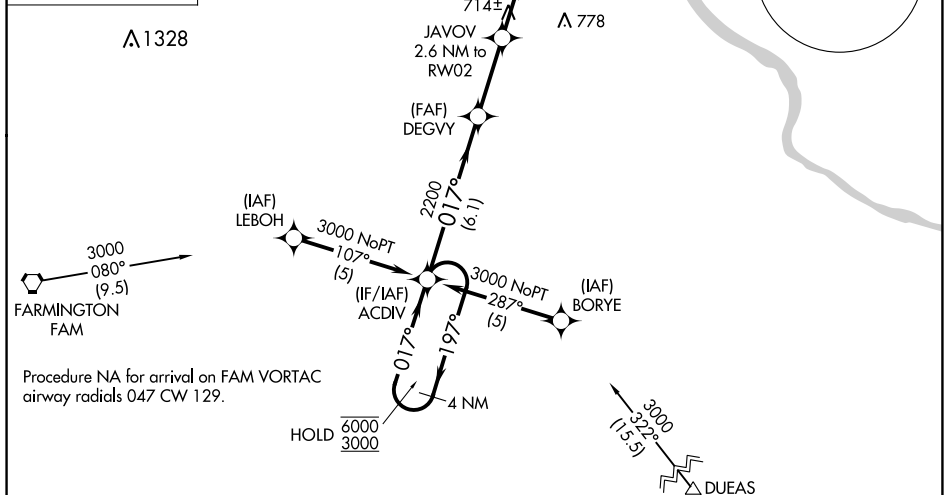
MISSED APPROACH: Climb to 3000
direct ENGYN and hold.

MISSED APCH FIX

4 NM

017° 197°

ENGYN



Procedure NA for arrival on FAM VORTAC
airway radials 047 CW 129.

| | | |
|----------|----------|----------|
| ELEV 372 | D | TDZE 370 |
|----------|----------|----------|

REIL Rwy 2 and 20 (L)
MIRL Rwy 2-20 (L)

