

VORTAC FOD	APP CRS	Rwy Idg	3851
113.5	112°	TDZE	1117
Chan 82		Apt Elev	1122

VOR/DME RWY 14

WEBSTER CITY MUNI (EBS)

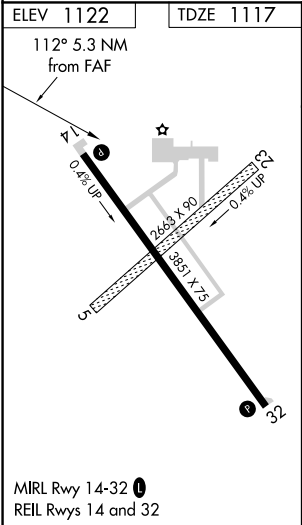
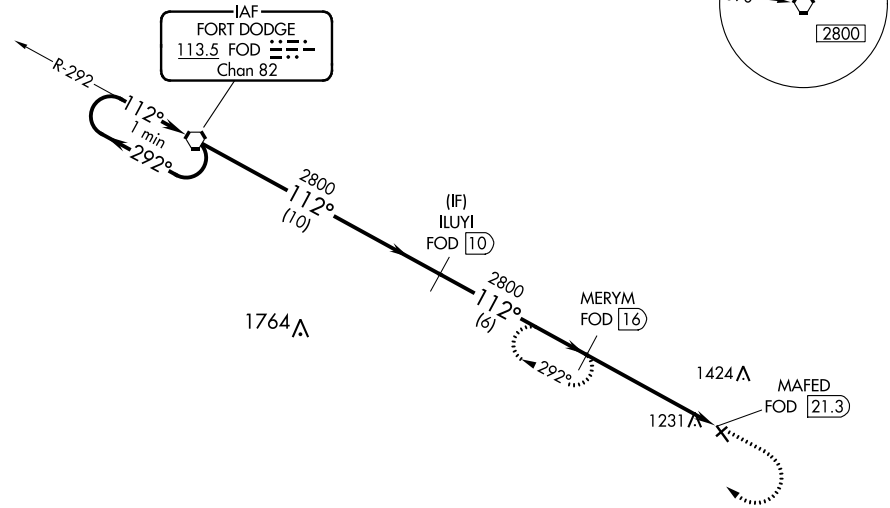
**⚠** When local altimeter setting not received, use Clarion altimeter setting and increase all MDA 60 feet.

**⚠** Helicopter visibility reduction below 3/4 SM not authorized.

MISSED APPROACH: Climb to 2800 then right turn on FOD VORTAC R-112 to MERYM/16 DME and hold.

AWOS-3 127.825	MINNEAPOLIS CENTER 134.0 288.3	UNICOM 122.8 (CTAF) <b>0</b>
-------------------	-----------------------------------	---------------------------------

NoPT for arrival on FOD VORTAC  
airway radials 215 CW 048.



VGSI and descent angles not coincident  
(VGSI Angle 3.25/TCH 25).

2800	↑	FOD R-112	MERYM FOD 16
------	---	-----------	--------------

One Minute Holding Pattern

2800 ← 292° 112° → 2800 2800

2.91° TCH 45

CATEGORY	A	B	C	D
S-14	1680-1	563 (600-1)	NA	
<b>C</b> CIRCLING	1680-1	558 (600-1)	NA	

NC-3, 31 DEC 2020 to 28 JAN 2021

NC-3, 31 DEC 2020 to 28 JAN 2021