

WAAS CH 90516 W32A	APP CRS 321°	Rwy Idg 3851 TDZE 1122 Apt Elev 1122
--	------------------------	---

RNAV (GPS) RWY 32

WEBSTER CITY MUNI (EBS)

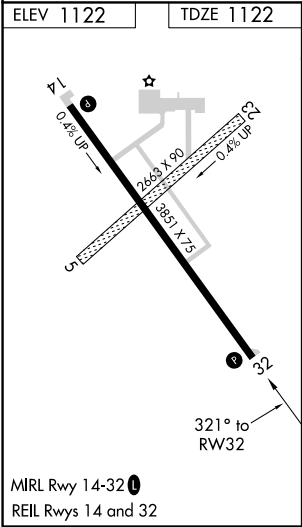
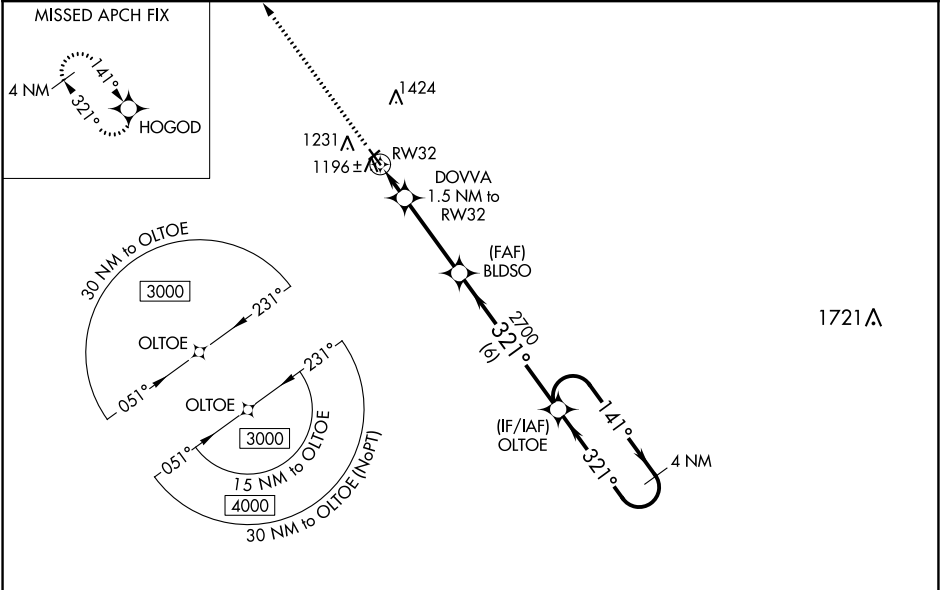
⚠

⚠

For uncompensated Baro-VNAV systems, LNAV/VNAV NA below -17°C (2°F) or above 54°C (130°F). DME/DME RNP-0.3 NA. When local altimeter setting not received, use Clarion altimeter setting and increase all DA 49 feet and all MDA 60 feet. Baro-VNAV and VDP NA when using Clarion altimeter setting. Helicopter visibility reduction below 3/4 SM NA.

MISSED APPROACH: Climb to 3000 direct HOGOD and hold.

AWOS-3 127.825	MINNEAPOLIS CENTER 134.0 288.3	UNICOM 122.8 (CTAF) 1
--------------------------	--	---------------------------------



3000	HOGOD	VGSI and RNAV glidepath not coincident (VGSI Angle 3.00/TCH 30).	OLTOE	4 NM Holding Pattern
*LNAV only.	DOVVA 1.5 NM to RW32	BLDSO	141°	3000
RW32	*1 NM to RW32	2700	321°	GP 3.00° TCH 40
1620*	1620*	2700	321°	
1 NM	0.5 NM	3.3 NM	6 NM	
CATEGORY	A	B	C	D
LPV DA	1372-1	250 (300-1)		NA
LNAV/VNAV DA	1372-1	250 (300-1)		NA
LNAV MDA	1460-1	338 (400-1)		NA
CIRCLING	1600-1	478 (500-1)		NA